

# Classification of Animals

Vertebrates  
(backbone)

Invertebrates  
(no backbone)

Warm-blooded

Cold-blooded

With jointed legs

Without legs

Mammals

Birds

Fish

Reptiles

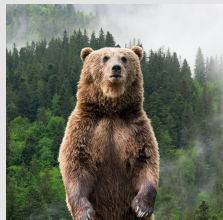
Amphibians

With 3  
pairs  
of legs

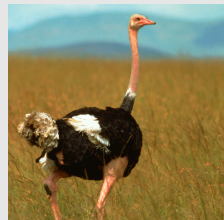
With more  
than 3 pairs  
of legs

Worm  
-like

Not-  
worm like



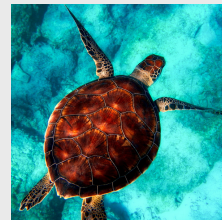
bear



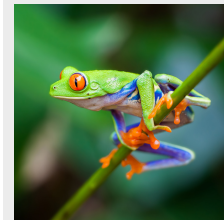
ostrich



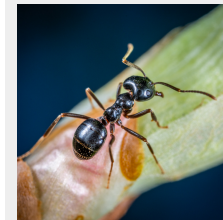
salmon



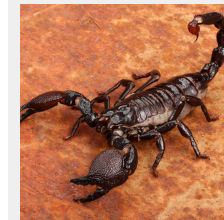
turtle



frog



ant



scorpion



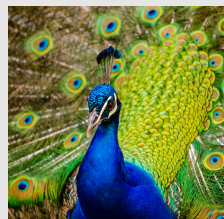
earthworm



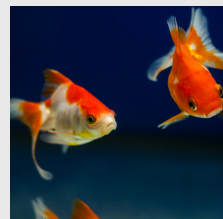
fluke worm



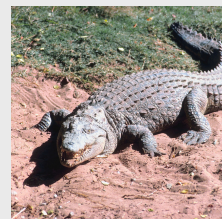
tiger



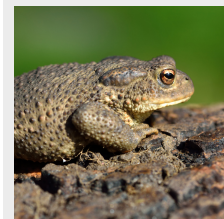
peacock



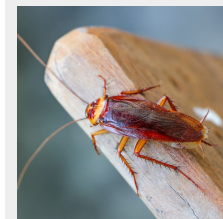
goldfish



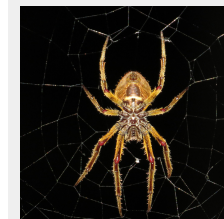
crocodile



toad



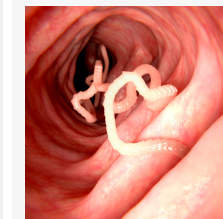
cockroach



spider



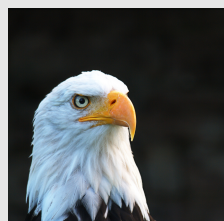
leech



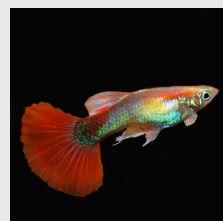
tapeworm



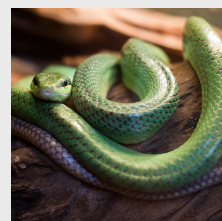
whale



eagle



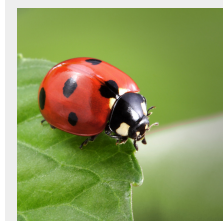
guppy



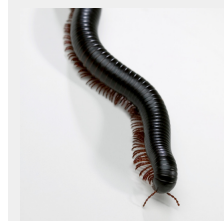
snake



newt



ladybug



millipede