

COPYRIGHT MADE SIMPLE

COPYRIGHT

I want to use a photo for my own work but I heard it might be protected by **COPYRIGHT**? What does that mean?



Copyright means the person who created the work gets to choose how it's used. All the photos you find online are copyrighted unless stated otherwise.



PUBLIC DOMAIN

What about photos that were taken a long time ago? Can I use them?

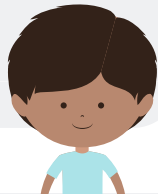


They could be in the **PUBLIC DOMAIN**. This means the photo now belongs to the public and you don't need permission to use it!



CREATIVE COMMONS 0

Can creators just give their photos to the public domain?

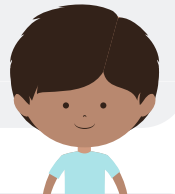


Yes! The creator can give their work a special license called **CREATIVE COMMONS ZERO** (CC0). You can use CC0 photos however you like.



CREATIVE COMMONS

What are the other **CREATIVE COMMONS** licenses?



There are 6 Creative Commons licenses that creators can choose from. They show how you can use the photo so you don't have to ask the creator.

