

ACKNOWLEDGEMENTS

We wish to thank the following people for whom your assistance and support was invaluable; we could not have done it without you.

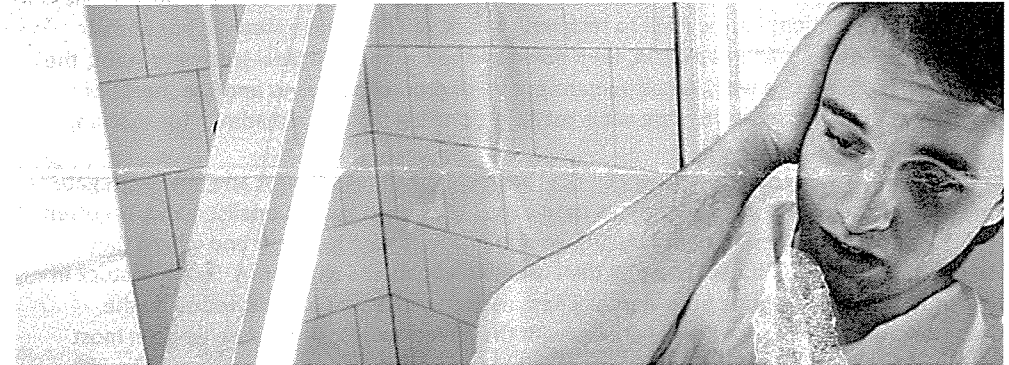
Emily Rutherford, Georgie Baker, Joanna Roberts, Indi Lowe, Nora Merralls, Emma Clark, Liam Ryan, Britt King, Aoife Nicklason, Harriet Craig, Amelia Rogers, Jean Zhang, Rachel Koh, Laura Ward, Kate Robinson, Tom Szoka, Claire Peterson, Chelsea Brite, Julia Kim, Bre Chapman, Paul Chynoweth.

Thank you also to Erin Adams and the staff of Union House Theatre.

TRINITY COLLEGE DRAMATIC SOCIETY PRESENTS

# COSÌ

By Louis Nowra



WEDNESDAY 4 SEPTEMBER, 7:30PM, GALA  
THURSDAY 5 SEPTEMBER, 7:30PM  
FRIDAY 6 SEPTEMBER, 7:30PM  
SATURDAY 7 SEPTEMBER, 2:00PM  
SATURDAY 7 SEPTEMBER, 7:30PM

## Directors Note

"Some people never go crazy. What truly horrible lives they must lead" - Charles Bukowski

Just in time to start rehearsals for 'Cosi', six weeks ago, I was released from the Melbourne Clinic after a six-week stay where I was diagnosed with Bipolar disorder, an incurable mental illness.

Why am I telling you this? Because being quiet about mental illness doesn't help anyone. So I speak out. And I made sure while directing this show that I had an open dialogue with the cast about mental illness, institutions and medications. 'Cosi' is more than a great Australian play, it's an important work which can bring to light so many aspects of the system which houses patients who suffer from mental disorders or disabilities. It's a work about the affect on the world these people can have if only given the chance.

I had a lot of time in the clinic to plan how to stage this production; In fact all of my pre-production preparations took place alongside fellow patients having shock therapy (yes, they still do that), calls for "medication time" and meeting someone one day and having them not recognise you the next. The centre piece of the set was designed with a feeling of hopelessness that can engulf a patient on the road to recovery, where you can take a step up, but end up going back down again, then up again, then down and so on. So, with (anti-)recovery stairs, the imagination pit, the huge walls we as humans put up to protect ourselves and the sheets of emotions we loose ourselves in – the set is really just one big mind of a madman (or woman).

From the comfort of the contemporary clinic I thought a lot about the past and how segregated from society people with mental illnesses used to be. They were institutionalised and forgotten about. Taken to places where their families wouldn't have to care for them and where they were out of sight. Out of these thoughts the ensemble of patients were born. Six souls stuck in time from 1871, representing how mental illness used to be treated and viewed as by the public. I wanted to juxtapose these patients with the patients of 'Cosi' because while in most ways, by the 1970s mental health care was much better, the stigma surrounding people with mental health problems was still negative throughout society.

Thank you to Anna and Claire who have been a two person wonder-machine in getting this show up and running and who have been there supporting me the whole way. And a huge thank you to the cast, who have kept an open mind and worked so hard over a short yet intense rehearsal period. Their willingness to delve into these characters, even when it can be unpleasant or uncomfortable, has resulted in really wonderful performances and I am so proud of every one of them.

"The Edge, there is no honest way to explain it because the only people who really know where it is are the ones who have gone over." - Hunter S. Thompson

*BY SARA TABITHA CATCHPOLE*

## CAST

Lewis	Matt Geleta
Julie	Imogen Cowan
Cherry	Juliet Archibald
Roy	Rob Lean
Doug	Jay Kim
Ruth	Maia Brent
Henry	Santo Tripodi
Zach	Jessica Bradford
Nicola	Gretel Hayden
Lucy	Simone Nathan
Justine	Gianna Morris

## ENSEMBLE

Kat Droppert  
Phoebe Thomson  
Claudia Weatherall  
James Allen  
Tyson Hollway-Clarke  
Ben Mahoney

## CREW

Director	Sara Tabitha Catchpole
Producer	Anna Wallace
Stage Manager	Claire Robinson
Treasurer	Ruaridh Williamson
Lighting Designer	Will Pennington
Assistant Stage Manager	Samantha Davidson
Marketing Directors	Emily Lewis Nick Cole
Costume Coordinator	Camille Nock