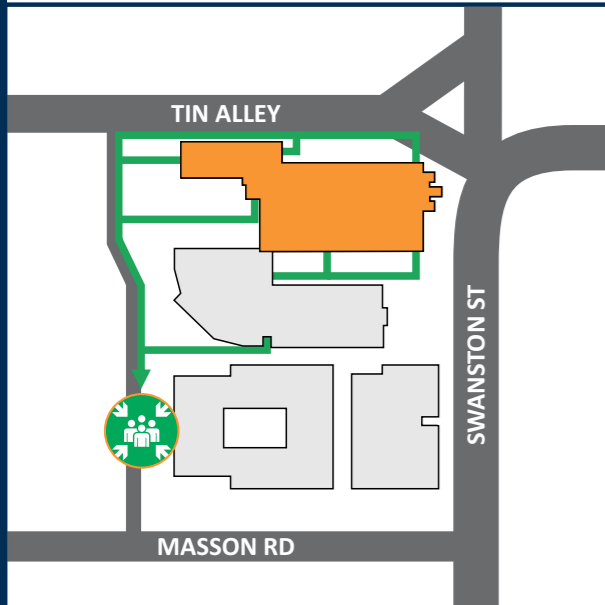


# DAVID CARO BUILDING

BUILDING 192, SWANSTON ST & TIN ALLEY,  
PARKVILLE VIC 3010

## BASEMENT



**ASSEMBLY AREA**  
**OUTSIDE THE ELIZABETH MURDOCH BUILDING**

## FIRE ORDERS

1. Assist any person in any immediate danger, if safe to do so.
2. Extinguish fire with appropriate equipment, if safe to do so.
3. Contain the fire (close doors and windows) if safe to do so.
4. Raise the alarm:
  - a. Use a Manual call point
  - b. Call Emergency Services (000);
  - c. Contact Security Control (8344 6666)
5. Inform the Chief Warden or other Warden
6. Follow the Building Evacuation Procedures

**Warning:** Only attempt to extinguish or contain a fire, if safe to do so.

## EVACUATION PROCEDURES

### ON SOUNDING OF THE ALERT TONE: "BEEP...BEEP"

- Be aware of a possible emergency situation occurring. Continually assess the situation and don't put yourself or others at risk.
- Prepare to evacuate, follow work shut-down procedures. Secure your area immediately.
- Wardens will check for signs of an incident and account for occupants with a disability.
- If smoke/fire/incident is discovered, commence evacuation and report this immediately to a Warden. Prevent others from entering the hazardous zone and alert surrounding people.
- If safe and trained to do so, attempt to extinguish the fire/contain the emergency incident.

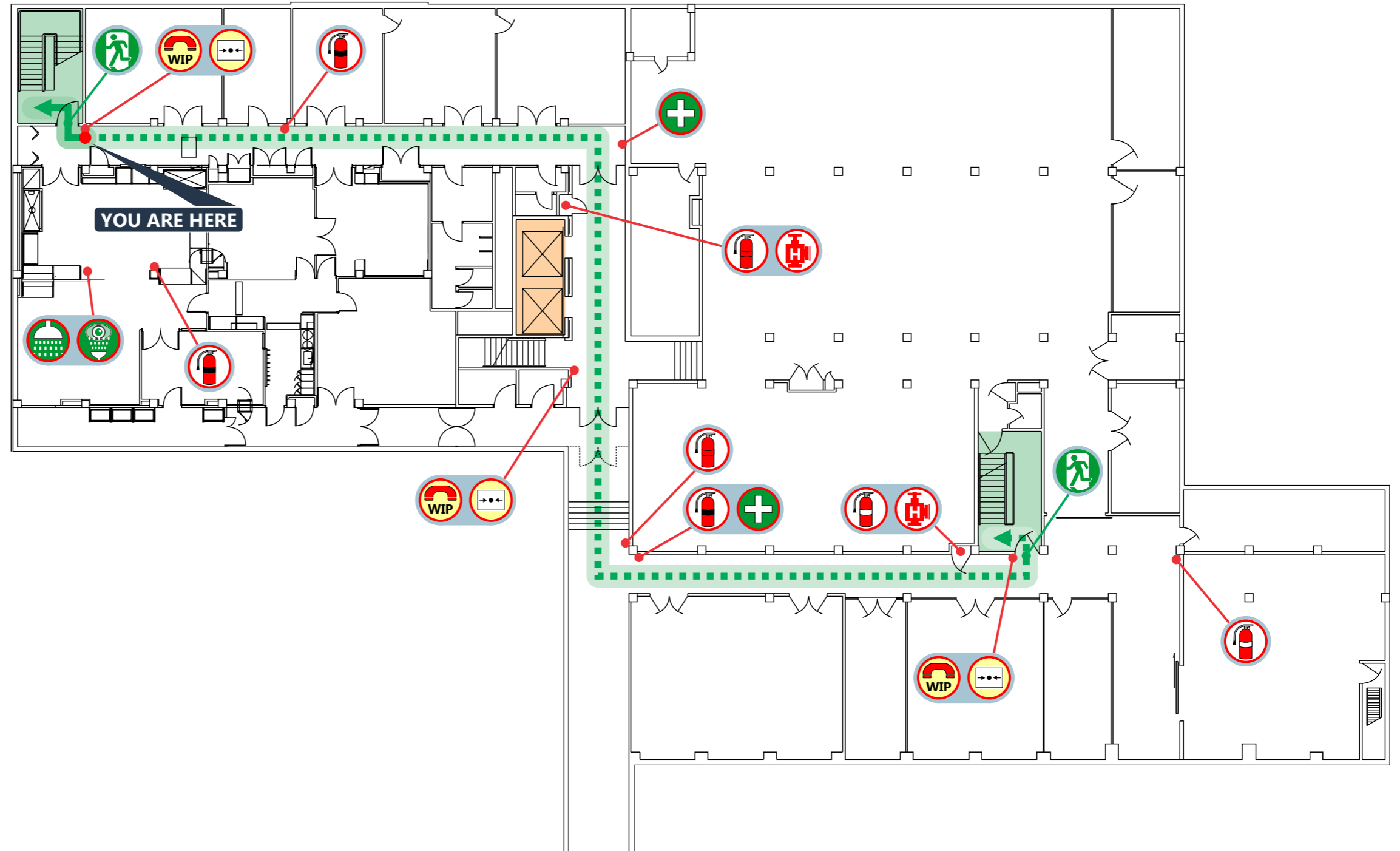
### ON SOUNDING OF THE EVACUATION TONE: "WHOOOP...WHOOOP"

- Evacuate via the nearest safe exit and proceed to the ASSEMBLY AREA (refer to site plan).
- Wardens will conduct a sweep to ensure occupants are clear and report to the Chief Warden.
- When the area has been evacuated all doors and windows should be closed to contain fire. Do not obstruct access to Exits.
- Wardens evacuate and remain with occupants at the ASSEMBLY AREA. Await further instructions from the responding Emergency Services.



THE UNIVERSITY OF  
MELBOURNE

# EVACUATION DIAGRAM



## IN AN EMERGENCY

**DIAL**  
**000**

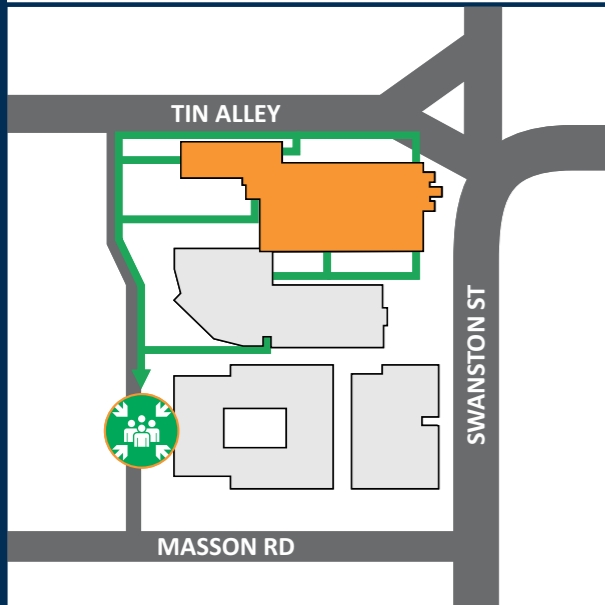
IN AN EMERGENCY		LEGEND	
	Fire Extinguisher CO2		Fire Extinguisher Dry Chemical Powder
	Fire Extinguisher Water		Hydrant
	First Aid Kit		Warden Intercom Point (Phone)
	Emergency Safety Shower		Emergency Call Point (White)
	Emergency Eye Wash		Exit
	Primary Evacuation Route		Secondary Evacuation Route

prensa

# DAVID CARO BUILDING

BUILDING 192, SWANSTON ST & TIN ALLEY,  
PARKVILLE VIC 3010

## BASEMENT



**ASSEMBLY AREA**  
**OUTSIDE THE ELIZABETH MURDOCH BUILDING**

## FIRE ORDERS

1. Assist any person in any immediate danger, if safe to do so.
2. Extinguish fire with appropriate equipment, if safe to do so.
3. Contain the fire (close doors and windows) if safe to do so.
4. Raise the alarm:
  - a. Use a Manual call point
  - b. Call Emergency Services (000);
  - c. Contact Security Control (8344 6666)
5. Inform the Chief Warden or other Warden
6. Follow the Building Evacuation Procedures

**Warning:** Only attempt to extinguish or contain a fire, if safe to do so.

## EVACUATION PROCEDURES

### ON SOUNDING OF THE ALERT TONE: "BEEP...BEEP"

- Be aware of a possible emergency situation occurring. Continually assess the situation and don't put yourself or others at risk.
- Prepare to evacuate, follow work shut-down procedures. Secure your area immediately.
- Wardens will check for signs of an incident and account for occupants with a disability.
- If smoke/fire/incident is discovered, commence evacuation and report this immediately to a Warden. Prevent others from entering the hazardous zone and alert surrounding people.
- If safe and trained to do so, attempt to extinguish the fire/contain the emergency incident.

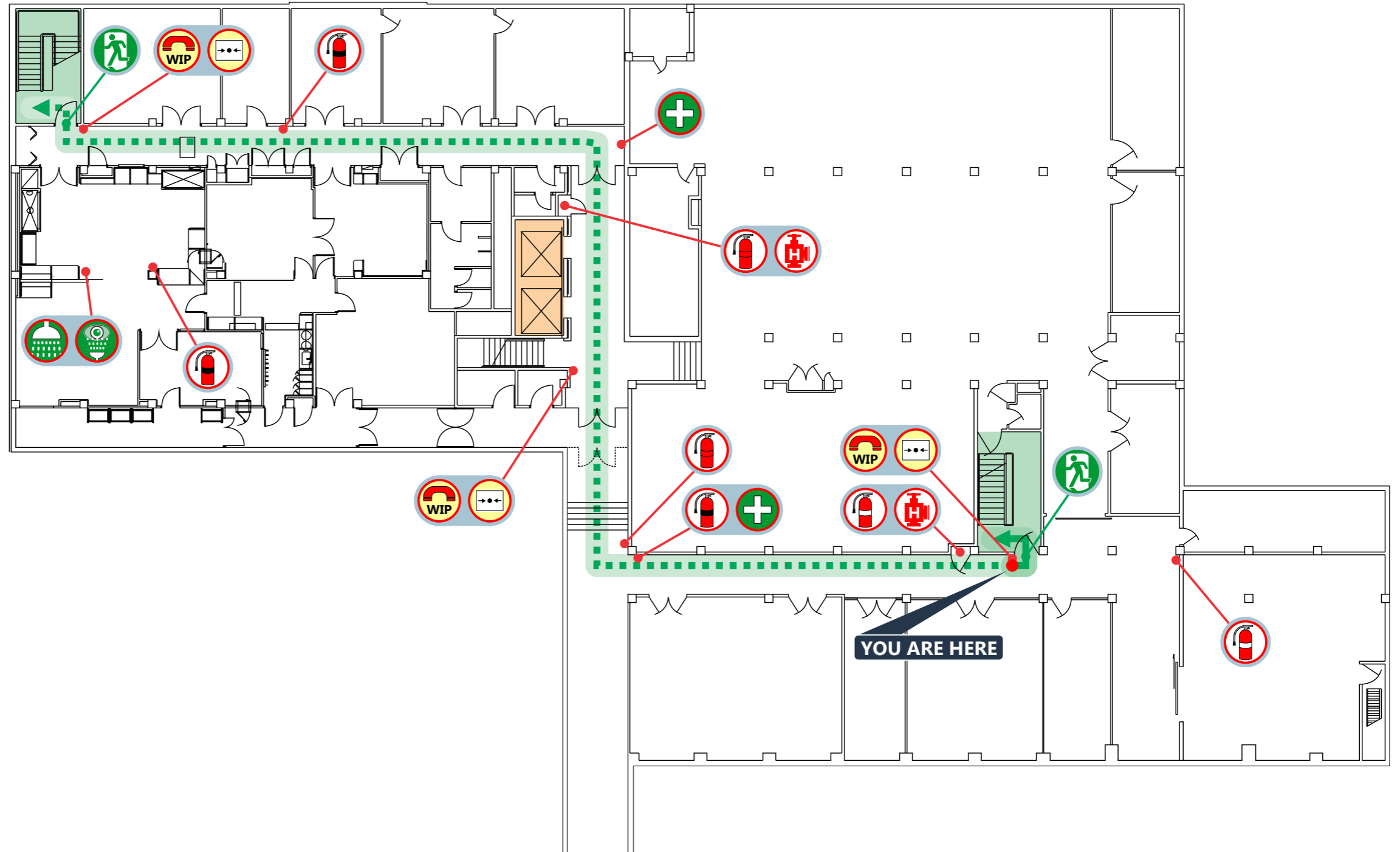
### ON SOUNDING OF THE EVACUATION TONE: "WHOOOP...WHOOOP"

- Evacuate via the nearest safe exit and proceed to the ASSEMBLY AREA (refer to site plan).
- Wardens will conduct a sweep to ensure occupants are clear and report to the Chief Warden.
- When the area has been evacuated all doors and windows should be closed to contain fire. Do not obstruct access to Exits.
- Wardens evacuate and remain with occupants at the ASSEMBLY AREA. Await further instructions from the responding Emergency Services.



THE UNIVERSITY OF  
MELBOURNE

# EVACUATION DIAGRAM



## IN AN EMERGENCY

**DIAL**  
**000**

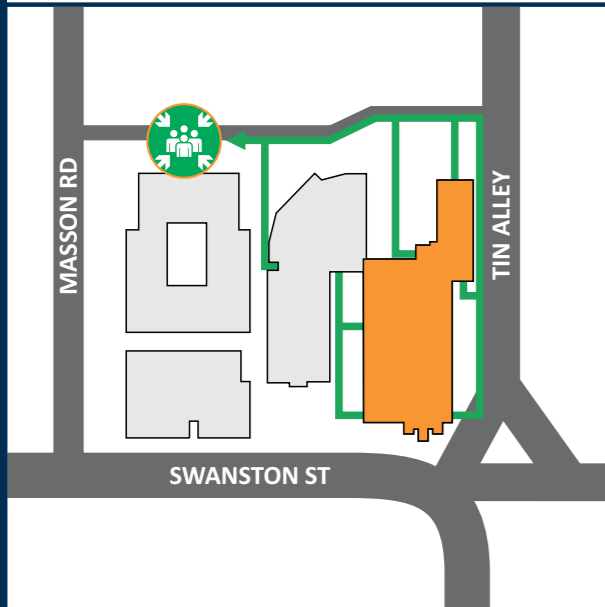
IN AN EMERGENCY		LEGEND	
	Fire Extinguisher CO2		Fire Extinguisher Dry Chemical Powder
	Fire Extinguisher Water		Hydrant
	First Aid Kit		Warden Intercom Point (Phone)
	Emergency Safety Shower		Emergency Call Point (White)
	Emergency Eye Wash		Exit
	Primary Evacuation Route		Secondary Evacuation Route

prensa

# DAVID CARO BUILDING

BUILDING 192, SWANSTON ST & TIN ALLEY,  
PARKVILLE VIC 3010

## BASEMENT



### ASSEMBLY AREA

## OUTSIDE THE ELIZABETH MURDOCH BUILDING

### FIRE ORDERS

1. Assist any person in any immediate danger, if safe to do so.
2. Extinguish fire with appropriate equipment, if safe to do so.
3. Contain the fire (close doors and windows) if safe to do so.
4. Raise the alarm:
  - a. Use a Manual call point
  - b. Call Emergency Services (000);
  - c. Contact Security Control (8344 6666)
5. Inform the Chief Warden or other Warden
6. Follow the Building Evacuation Procedures

**Warning:** Only attempt to extinguish or contain a fire, if safe to do so.

### EVACUATION PROCEDURES

#### ON SOUNDING OF THE ALERT TONE: "BEEP...BEEP"

- Be aware of a possible emergency situation occurring. Continually assess the situation and don't put yourself or others at risk.
- Prepare to evacuate, follow work shut-down procedures. Secure your area immediately.
- Wardens will check for signs of an incident and account for occupants with a disability.
- If smoke/fire/incident is discovered, commence evacuation and report this immediately to a Warden. Prevent others from entering the hazardous zone and alert surrounding people.
- If safe and trained to do so, attempt to extinguish the fire/contain the emergency incident.

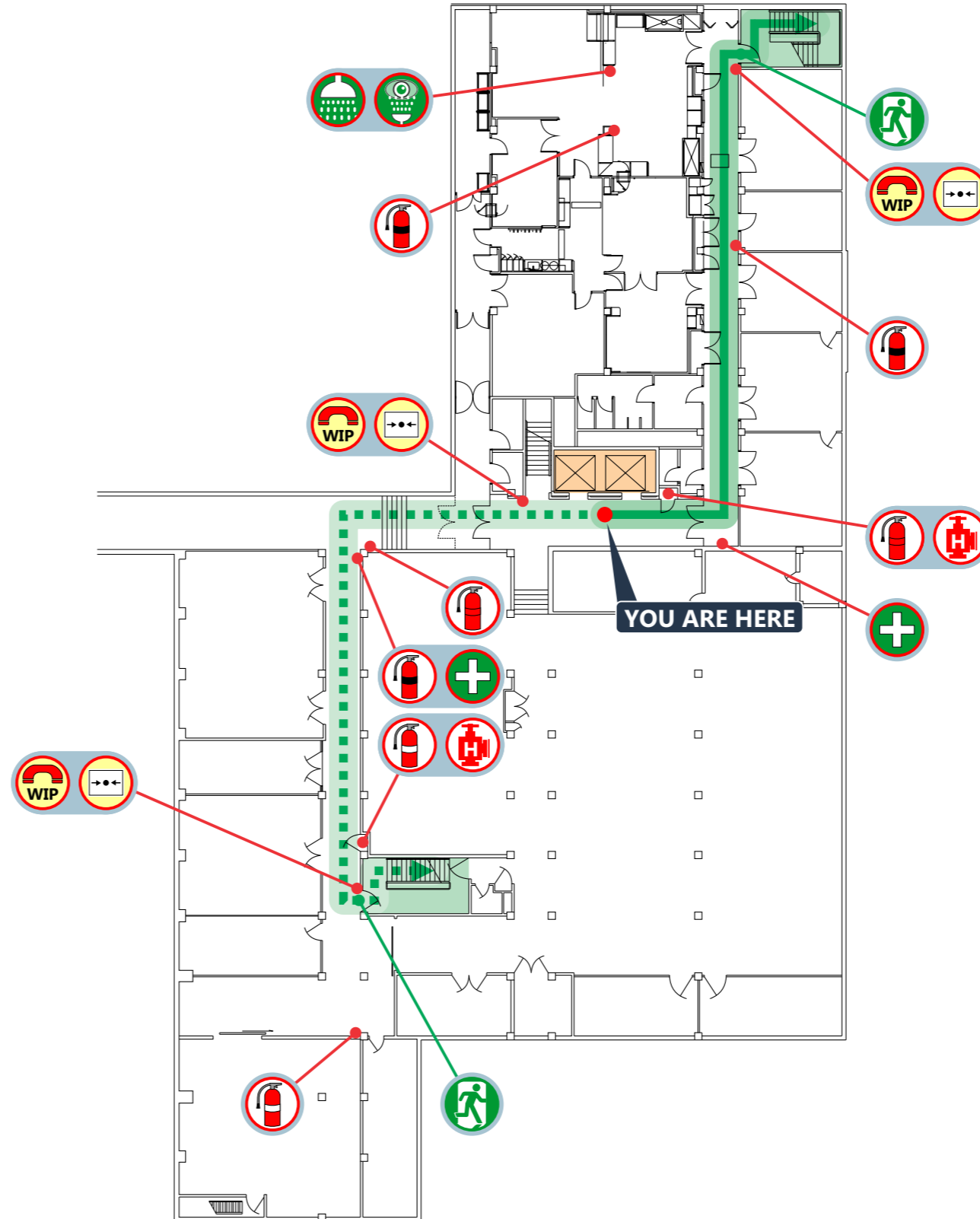
#### ON SOUNDING OF THE EVACUATION TONE: "WHOOOP...WHOOOP"

- Evacuate via the nearest safe exit and proceed to the ASSEMBLY AREA (refer to site plan).
- Wardens will conduct a sweep to ensure occupants are clear and report to the Chief Warden.
- When the area has been evacuated all doors and windows should be closed to contain fire. Do not obstruct access to Exits.
- Wardens evacuate and remain with occupants at the ASSEMBLY AREA. Await further instructions from the responding Emergency Services.



THE UNIVERSITY OF  
MELBOURNE

# EVACUATION DIAGRAM



### IN AN EMERGENCY

**DIAL  
000**

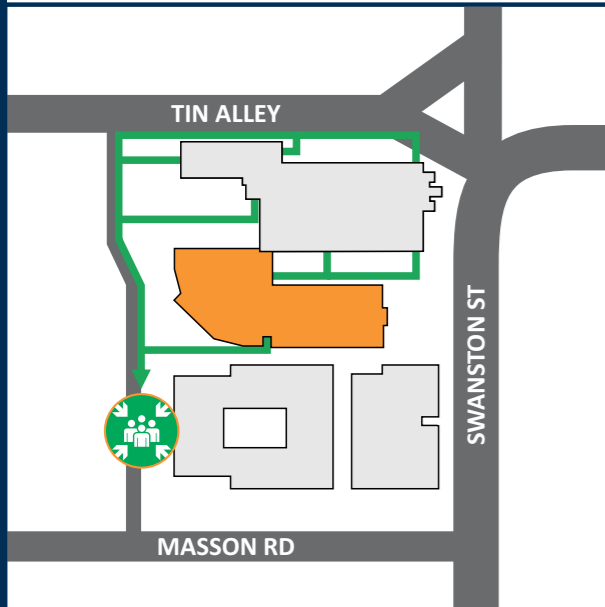
IN AN EMERGENCY		LEGEND	
	Fire Extinguisher CO2		Fire Extinguisher Dry Chemical Powder
	Fire Extinguisher Water		Hydrant
	First Aid Kit		Warden Intercom Point (Phone)
	Emergency Safety Shower		Emergency Call Point (White)
	Emergency Eye Wash		Primary Evacuation Route
	Exit		Secondary Evacuation Route

prensa

# DAVID CARO BUILDING

BUILDING 192, SWANSTON ST & TIN ALLEY,  
PARKVILLE VIC 3010

## BASEMENT



**ASSEMBLY AREA**  
**OUTSIDE THE ELIZABETH MURDOCH BUILDING**

### FIRE ORDERS

1. Assist any person in any immediate danger, if safe to do so.
2. Extinguish fire with appropriate equipment, if safe to do so.
3. Contain the fire (close doors and windows) if safe to do so.
4. Raise the alarm:
  - a. Use a Manual call point
  - b. Call Emergency Services (000);
  - c. Contact Security Control (8344 6666)
5. Inform the Chief Warden or other Warden
6. Follow the Building Evacuation Procedures

**Warning:** Only attempt to extinguish or contain a fire, if safe to do so.

### EVACUATION PROCEDURES

#### ON SOUNDING OF THE ALERT TONE: "BEEP...BEEP"

- Be aware of a possible emergency situation occurring. Continually assess the situation and don't put yourself or others at risk.
- Prepare to evacuate, follow work shut-down procedures. Secure your area immediately.
- Wardens will check for signs of an incident and account for occupants with a disability.
- If smoke/fire/incident is discovered, commence evacuation and report this immediately to a Warden. Prevent others from entering the hazardous zone and alert surrounding people.
- If safe and trained to do so, attempt to extinguish the fire/contain the emergency incident.

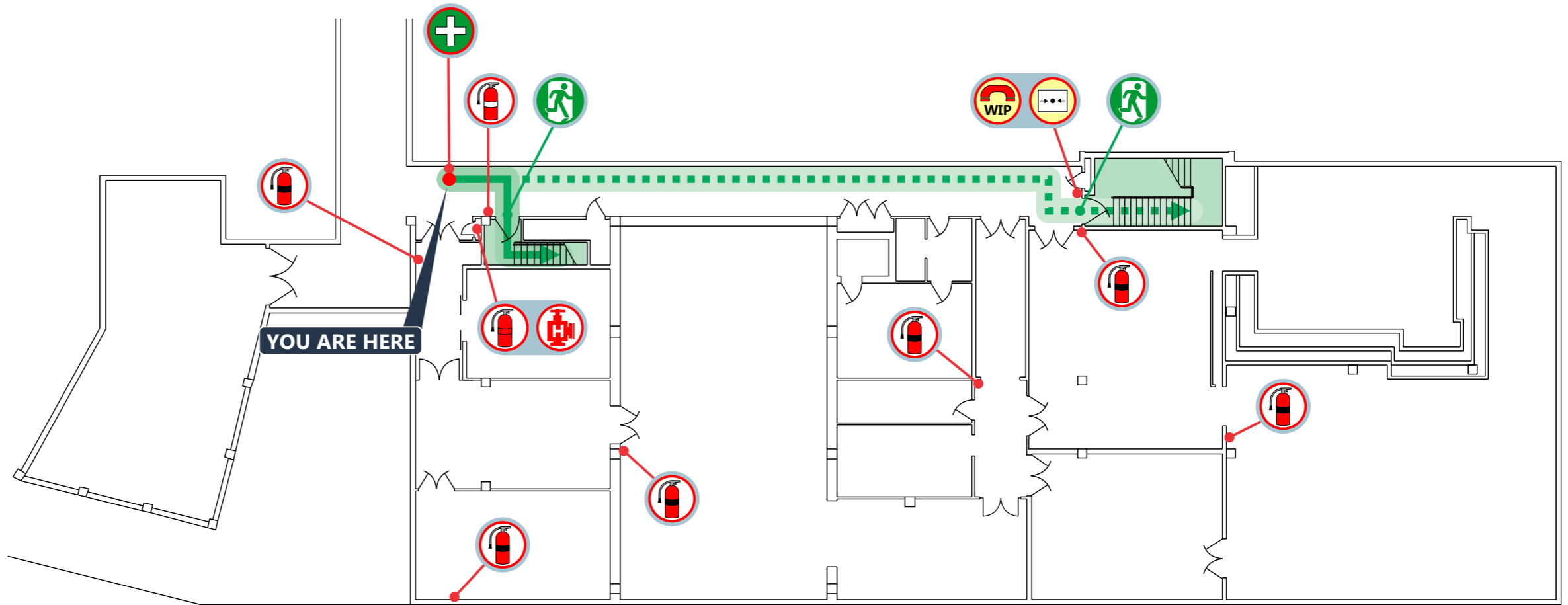
#### ON SOUNDING OF THE EVACUATION TONE: "WHOOOP...WHOOOP"

- Evacuate via the nearest safe exit and proceed to the ASSEMBLY AREA (refer to site plan).
- Wardens will conduct a sweep to ensure occupants are clear and report to the Chief Warden.
- When the area has been evacuated all doors and windows should be closed to contain fire. Do not obstruct access to Exits.
- Wardens evacuate and remain with occupants at the ASSEMBLY AREA. Await further instructions from the responding Emergency Services.



THE UNIVERSITY OF  
MELBOURNE

# EVACUATION DIAGRAM

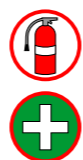


### IN AN EMERGENCY

**DIAL**  
**000**



Fire Extinguisher  
CO2



Fire Extinguisher  
Dry Chemical Powder



Fire Extinguisher  
Water



Hydrant



Warden Intercom  
Point (Phone)



Emergency Call  
Point (White)



First Aid  
Kit



Exit



Primary  
Evacuation Route



Secondary  
Evacuation Route

prensa



# DAVID CARO BUILDING

BUILDING 192, SWANSTON ST & TIN ALLEY,  
PARKVILLE VIC 3010

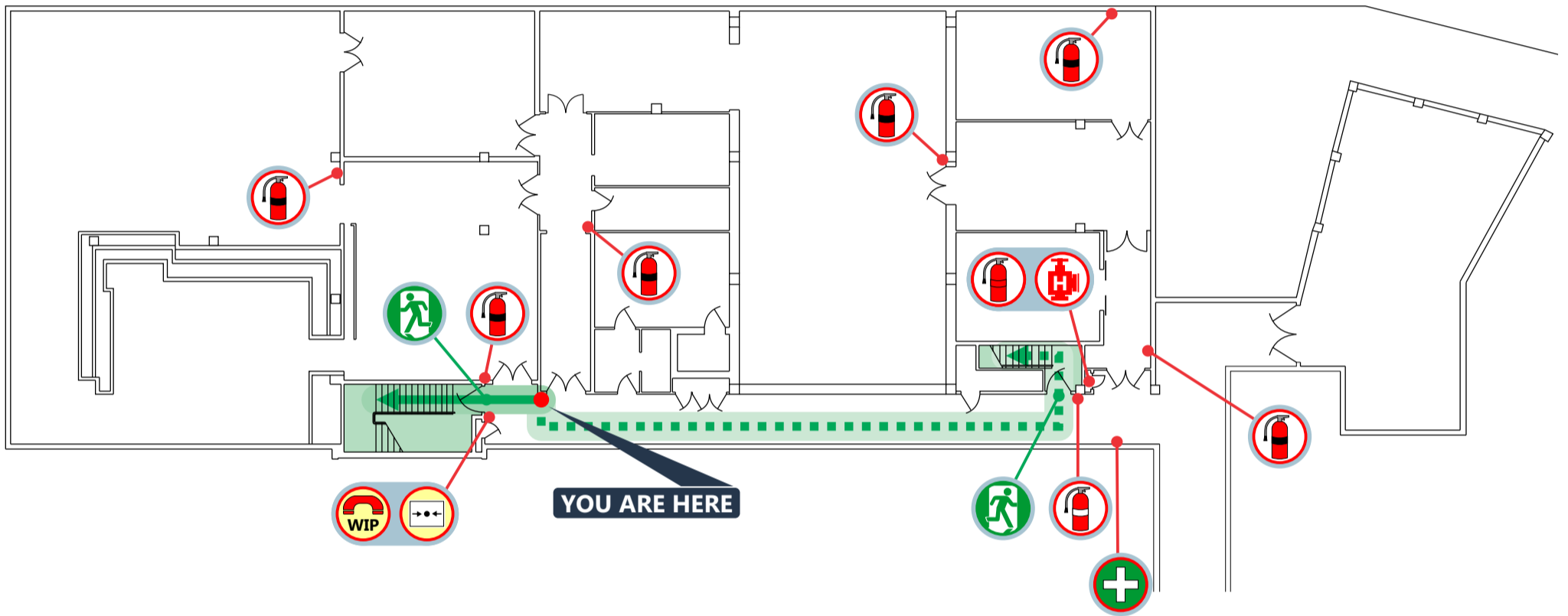


THE UNIVERSITY OF  
MELBOURNE

# EVACUATION DIAGRAM

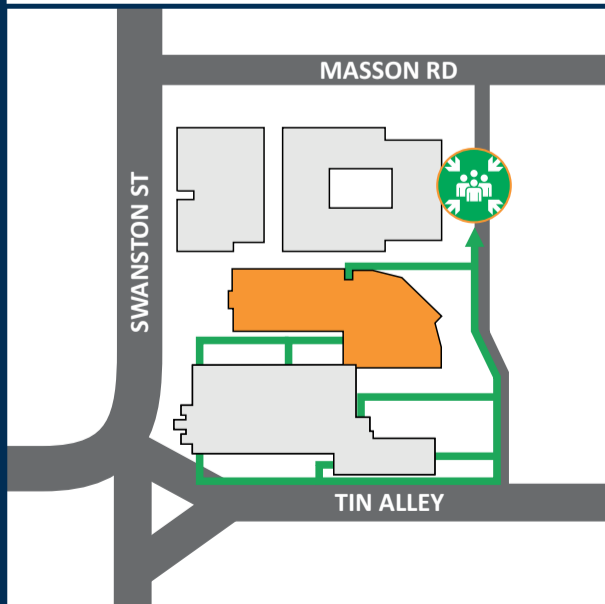


## BASEMENT



### ASSEMBLY AREA

### OUTSIDE THE ELIZABETH MURDOCH BUILDING



### IN AN EMERGENCY

**DIAL 000**



### FIRE ORDERS

1. Assist any person in any immediate danger, if safe to do so.
2. Extinguish fire with appropriate equipment, if safe to do so.
3. Contain the fire (close doors and windows) if safe to do so.
4. Raise the alarm:
  - a. Use a Manual call point
  - b. Call Emergency Services (000);
  - c. Contact Security Control (8344 6666)
5. Inform the Chief Warden or other Warden
6. Follow the Building Evacuation Procedures

**Warning:** Only attempt to extinguish or contain a fire, if safe to do so.

### EVACUATION PROCEDURES

#### ON SOUNDING OF THE ALERT TONE: "BEEP...BEEP"

- Be aware of a possible emergency situation occurring. Continually assess the situation and don't put yourself or others at risk.
- Prepare to evacuate, follow work shut-down procedures. Secure your area immediately.
- Wardens will check for signs of an incident and account for occupants with a disability.
- If smoke/fire/incident is discovered, commence evacuation and report this immediately to a Warden. Prevent others from entering the hazardous zone and alert surrounding people.
- If safe and trained to do so, attempt to extinguish the fire/contain the emergency incident.

#### ON SOUNDING OF THE EVACUATION TONE: "WHOOOP...WHOOOP"

- Evacuate via the nearest safe exit and proceed to the ASSEMBLY AREA (refer to site plan).
- Wardens will conduct a sweep to ensure occupants are clear and report to the Chief Warden.
- When the area has been evacuated all doors and windows should be closed to contain fire. Do not obstruct access to Exits.
- Wardens evacuate and remain with occupants at the ASSEMBLY AREA. Await further instructions from the responding Emergency Services.

### LEGEND

- Fire Extinguisher CO2
- Fire Extinguisher Dry Chemical Powder
- Fire Extinguisher Water
- Hydrant
- Warden Intercom Point (Phone)
- Emergency Call Point (White)
- First Aid Kit
- Exit
- Primary Evacuation Route
- Secondary Evacuation Route