

ELECTRICAL ENCLOSURE

FOR HOUSING THE FOLLOWING:

- MOTOR STARTERS
- CONTROL CIRCUITS, RELAYS AND TERMINALS
- SWITCH MODE POWER SUPPLY 415VAC/24VDC
- AB MICRO 830 PLC

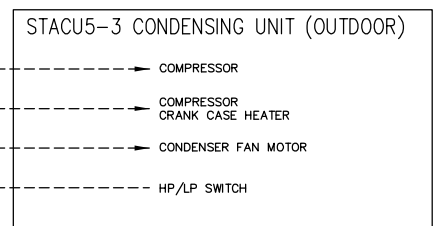
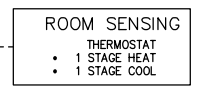
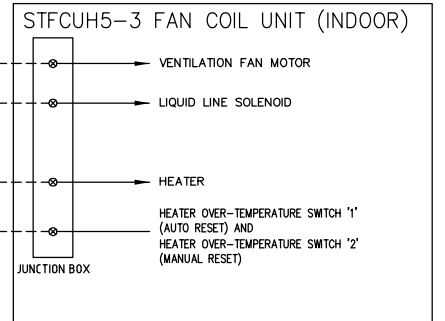
ENCLOSURE CONTROL AND INDICATION:

- MAIN ISOLATOR (LOCKABLE, 3 POLE, 415VAC),
- CONTROL SWITCH - "OFF/VENT/AIRCON",
- COMMON FAULT LAMP (ORANGE),
- RESET PUSHBUTTON (BLACK).

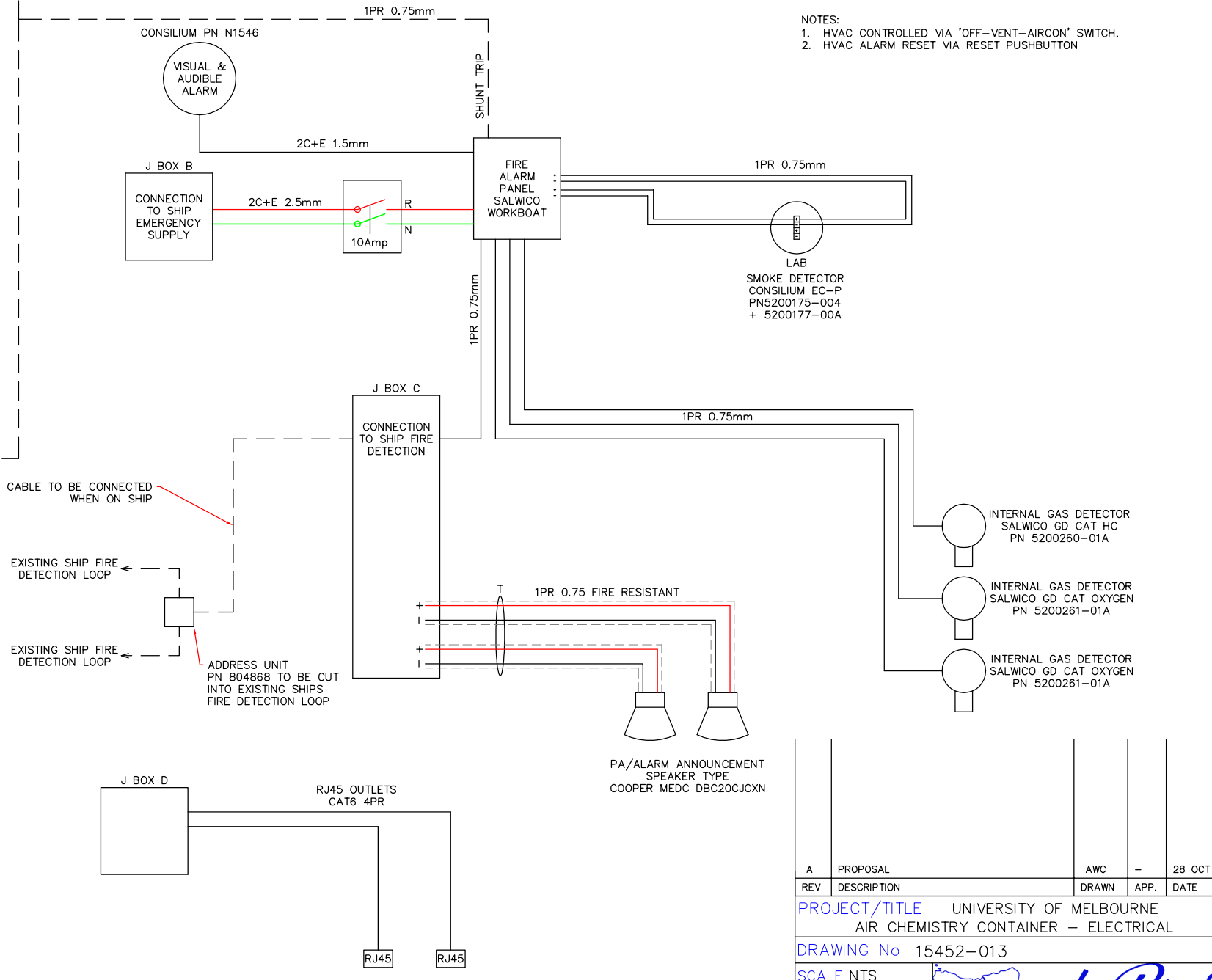
CONTROL CIRCUIT - 24VDC, DERIVED FROM INCOMING SUPPLY

ALL MOTOR CIRCUITS PROTECTED BY INDIVIDUAL MOTOR STARTERS INCORPORATING THERMAL OVERLOAD, MAGNETIC OVERLOAD PROTECTION AND PHASE LOSS PROTECTION.

REFRIGERATION CIRCUITS PROTECTED BY HP/LP SWITCH.



NOTES:
1. HVAC CONTROLLED VIA 'OFF-VENT-AIRCON' SWITCH.
2. HVAC ALARM RESET VIA RESET PUSHBUTTON



A	PROPOSAL	AWC	-	28 OCT 15
REV	DESCRIPTION	DRAWN	APP.	DATE
PROJECT/TITLE UNIVERSITY OF MELBOURNE AIR CHEMISTRY CONTAINER - ELECTRICAL				
DRAWING No 15452-013				
SCALE NTS				
SHT	A1			
REV	A			

