

Have questions?

Independent Health and Disability Advocate

If you want to talk to someone who isn't involved in the study, you can contact an independent health and disability advocate on:

Phone: [0800 555 050](tel:0800555050)

Email: advocacy@hdc.org.nz

Māori Health Team

If you require Māori cultural support, you can talk to your whanau in the first instance. Alternatively you may contact the administrator for He Kamaka Waiora (Māori Health Team) on:

Phone: [09 486 8324 ext 2324](tel:094868324)

HDEC

You can also contact the health and disability ethics committee (HDEC) that approved this study on:

Phone: [0800 4 ETHICS \(0800 438 4427\)](tel:08004ETHICS)

Email: hdec@moh.govt.nz

FIIX study coordinator

Melissa Vercoe

Phone: [09 923 1281](tel:099231281)

Email: theFIIXstudy@auckland.ac.nz



If you would like to participate in the FIIX study please contact the study coordinator via email: theFIIXstudy@auckland.ac.nz.

What is the research for?

By doing this research we hope to provide more opportunities for couples with unexplained infertility to become pregnant.

IUI is a less invasive procedure than IVF and may allow couples faster access to publicly funded fertility treatment. It may also provide the New Zealand government with further funding to distribute to more couples with infertility.

580 couples will take part in this study from fertility clinics across New Zealand.

Half of couples will receive four cycles of IUI, plus two cycles of IVF (if required), and the other half will receive one cycle of IVF plus a further cycle of IVF (if required).

For more information about The FIIX Study visit:

theFIIXstudy.auckland.ac.nz

Do you have unexplained infertility?

Have you qualified for publicly funded treatment?



You are invited to take part in The FIIX Study



We need your help to find out what the best treatment option is for couples with unexplained infertility

The FIIX study is looking for couples with unexplained infertility who have been accepted for publicly funded fertility treatment.

We are comparing four cycles of IUI with one cycle of IVF.

This is because we suspect that IUI will lead to the same number of births as IVF.

Couples will still have access to their two cycles of publicly funded IVF and may be eligible for earlier treatment.

What is the purpose of the study?

Around 30% of infertile couples in New Zealand have unexplained infertility.

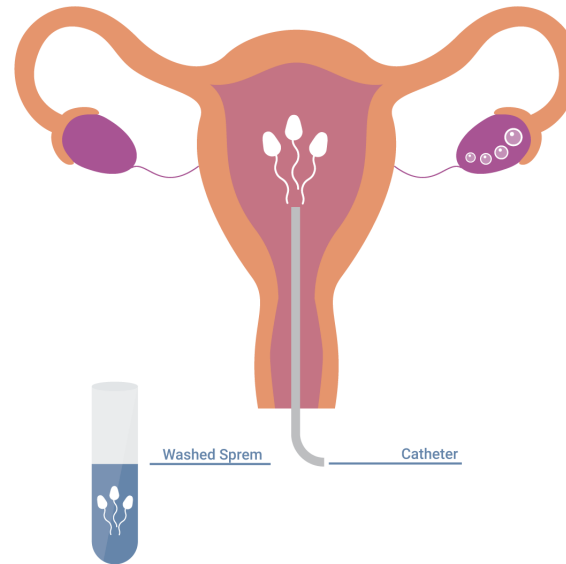
Currently these couples are required to have five years of infertility before they are eligible for publicly funded treatment.

By doing this research we hope to provide more opportunities for couples with unexplained infertility to become pregnant.

The two main fertility procedures available through public funding in New Zealand are:

- In Vitro Fertilisation (IVF) and;
- Intrauterine Insemination (IUI)

What is Intrauterine Insemination (IUI)?



IUI - sperm is placed directly into the uterus to assist fertilisation of the egg. It is done after oral medication has been given to allow the production and release of 1 to 2 eggs.

What does the study involve?

Couples who meet the criteria for public funding and are on the waitlist for fertility treatment will be approached by email or phone from one of our study coordinators.

If you agree to take part in the FIIX study you will be randomly allocated to either an IVF or IUI treatment group.

This means you have an equal chance of being in either treatment group, and you will not be able to choose which treatment group to be in.

What is In Vitro Fertilisation (IVF)?

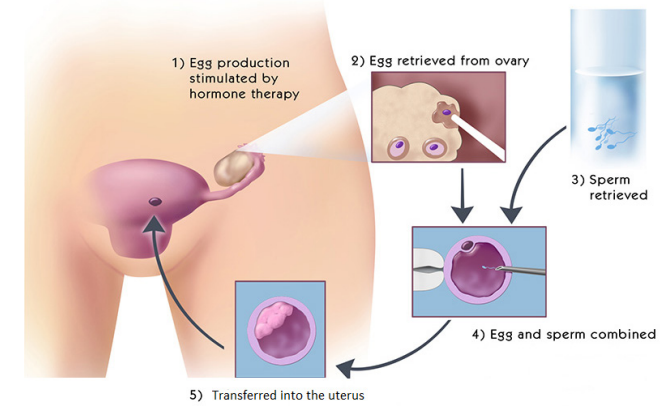


Image courtesy of www.redrockfertility.com/what-is-ivf/

IVF - an egg is collected from a woman and fertilised with sperm in a laboratory. It then develops before being replaced inside the uterus 3-6 days later.

You will be told which group you have been assigned to after you have signed the study consent form.

Both IUI and IVF procedures will be explained to you in detail at your clinic.

The usual risks and disadvantages of IUI and IVF apply and these will be further explained to you at time of treatment by your clinician.

You will be asked to provide your consent to carry out the procedure as per normal clinic policy.