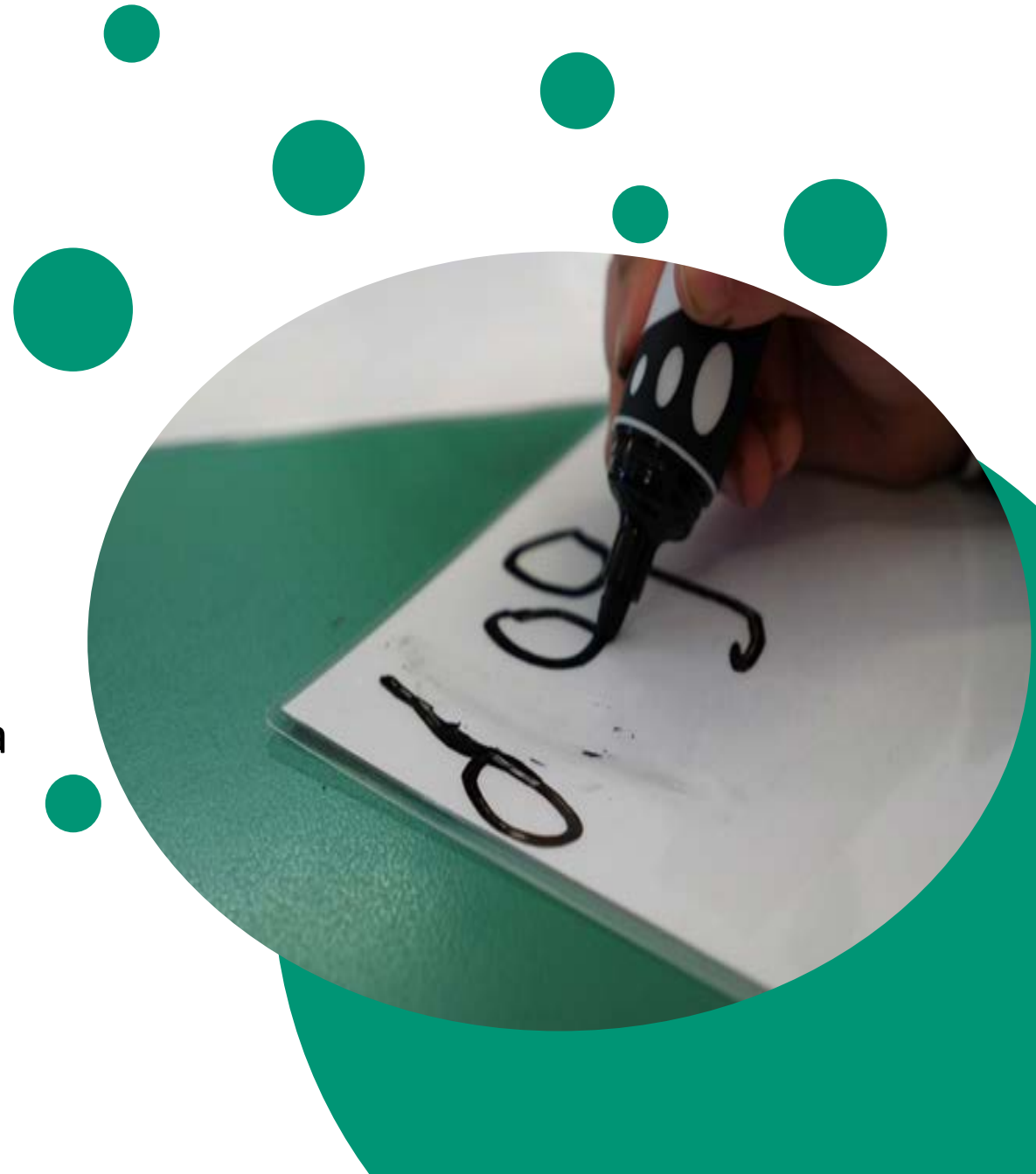


A Better Start to early literacy learning: Teacher-implemented intervention for Year 1 children

Gail Gillon, Brigid McNeill, Amy Scott,, Amanda Denston, Leanne Wilson, Karyn Carson and Angus Macfarlane
University of Canterbury, New Zealand



Better Start Literacy Study Participants

(Aged 5;0 – 5;11)

268 initial assessments
across 7 schools

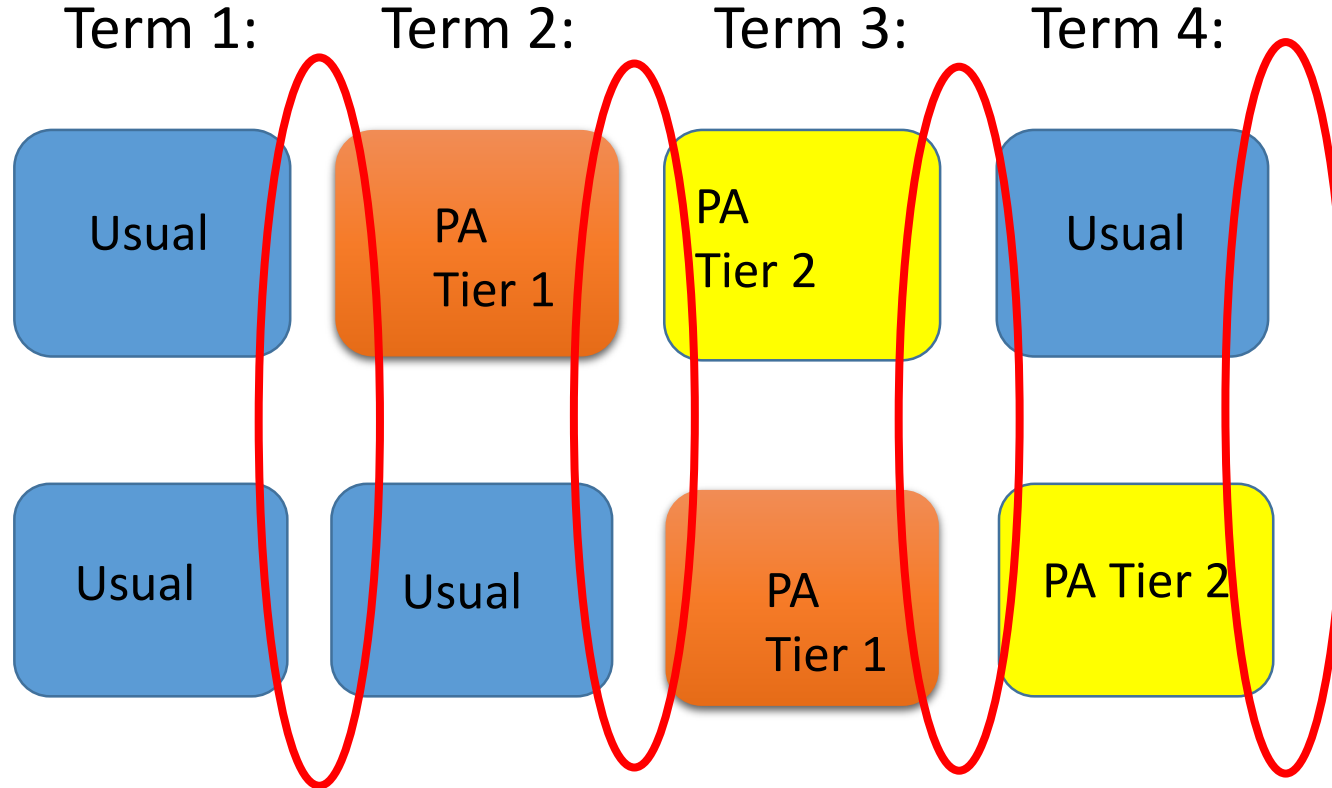
170

eligible for comprehensive assessment

144 children tracked
over the full year

Delayed Intervention Study Design:

Strand A
*(n=72) across
3 schools*



Strand B
*(n=69) across
4 schools*



Intervention components

**Evidence-based
phonological awareness
teaching**

Culturally responsive

Providing contexts for learning where the language, identity and culture of Māori and Pasifika learners and their family is affirmed..

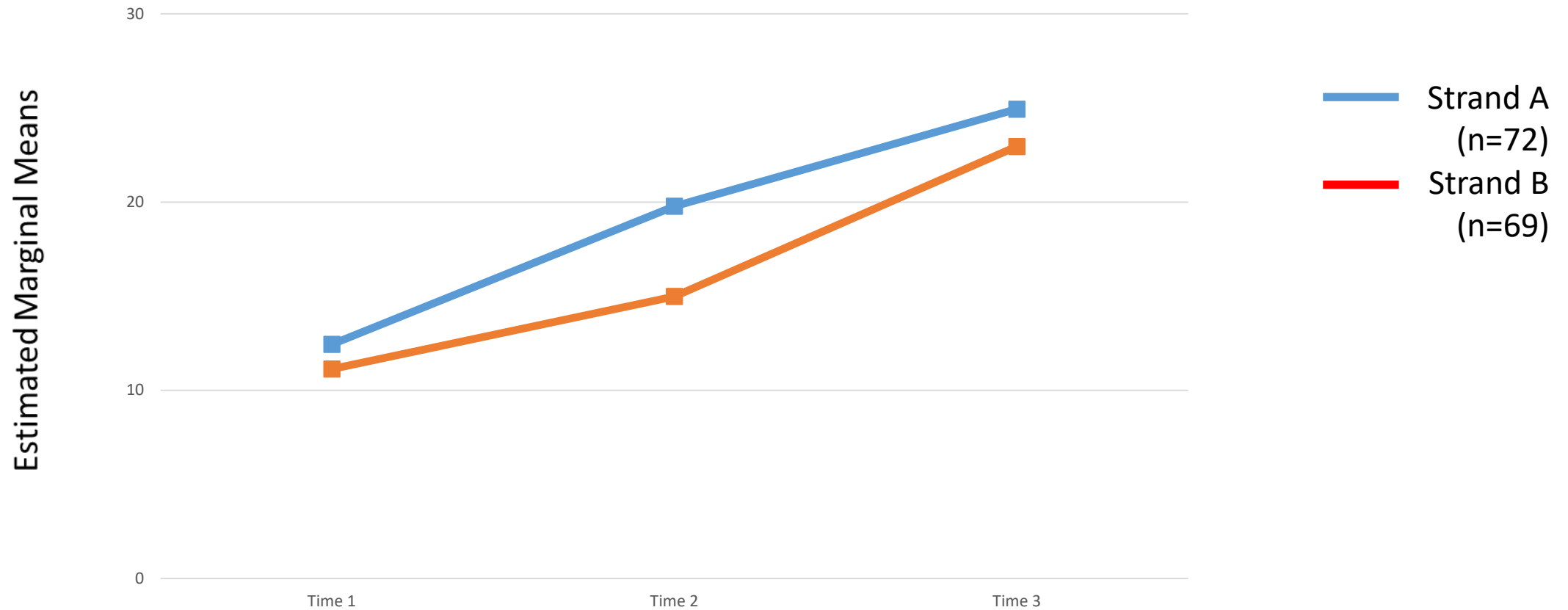


Co-constructed

**Evidence based
vocabulary teaching**



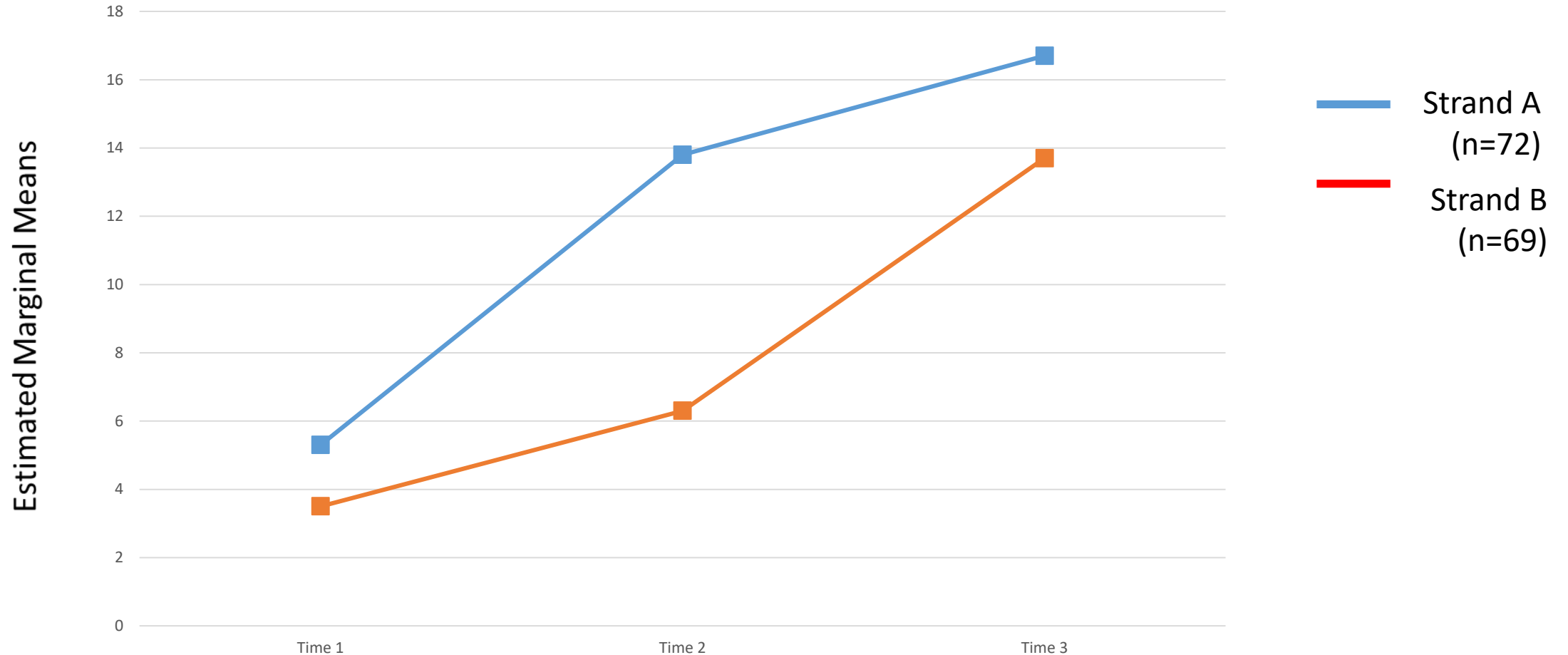
Phoneme Awareness (combined score)



Repeated measures ANOVA: Statistically significant effects of time ($p < .001$) and group*time ($p = 0.003$)

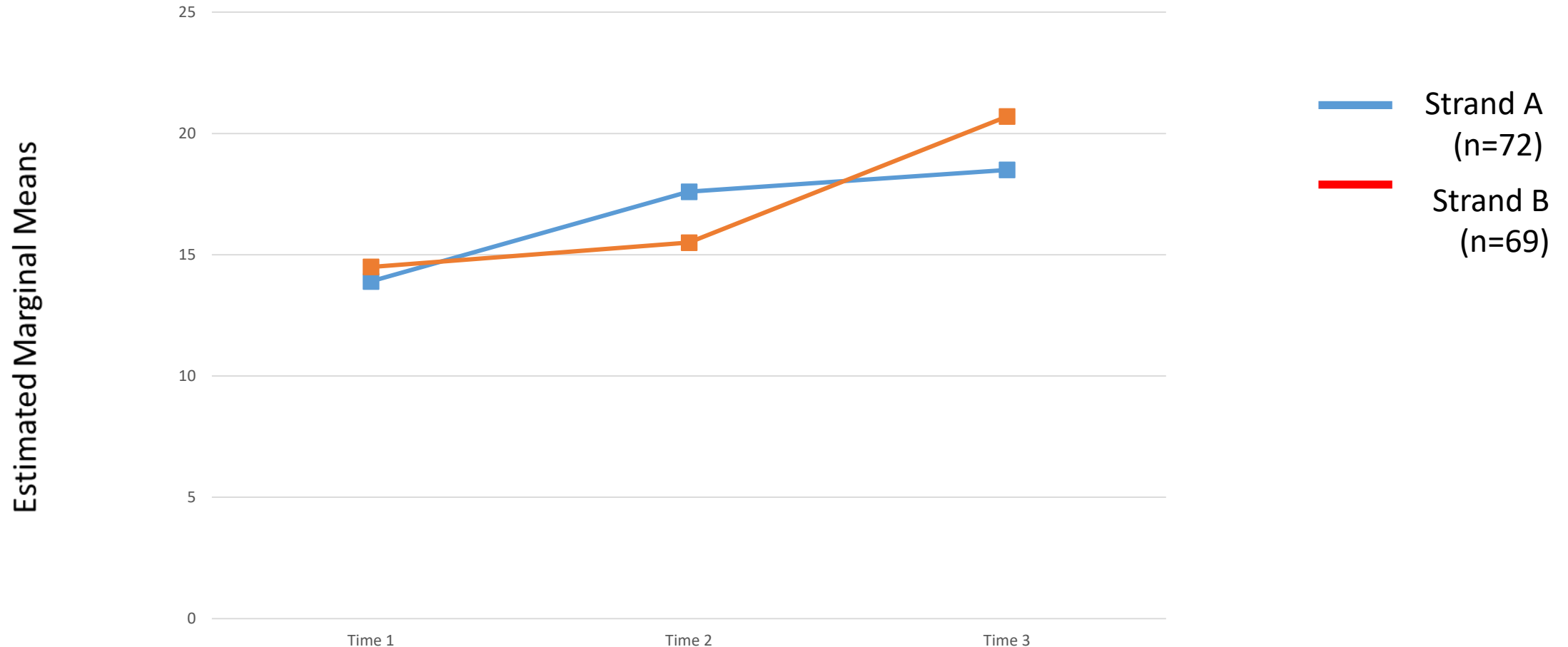
- Significantly difference in Time 2 across groups.

Non-Word Reading (Graphemes Correct)



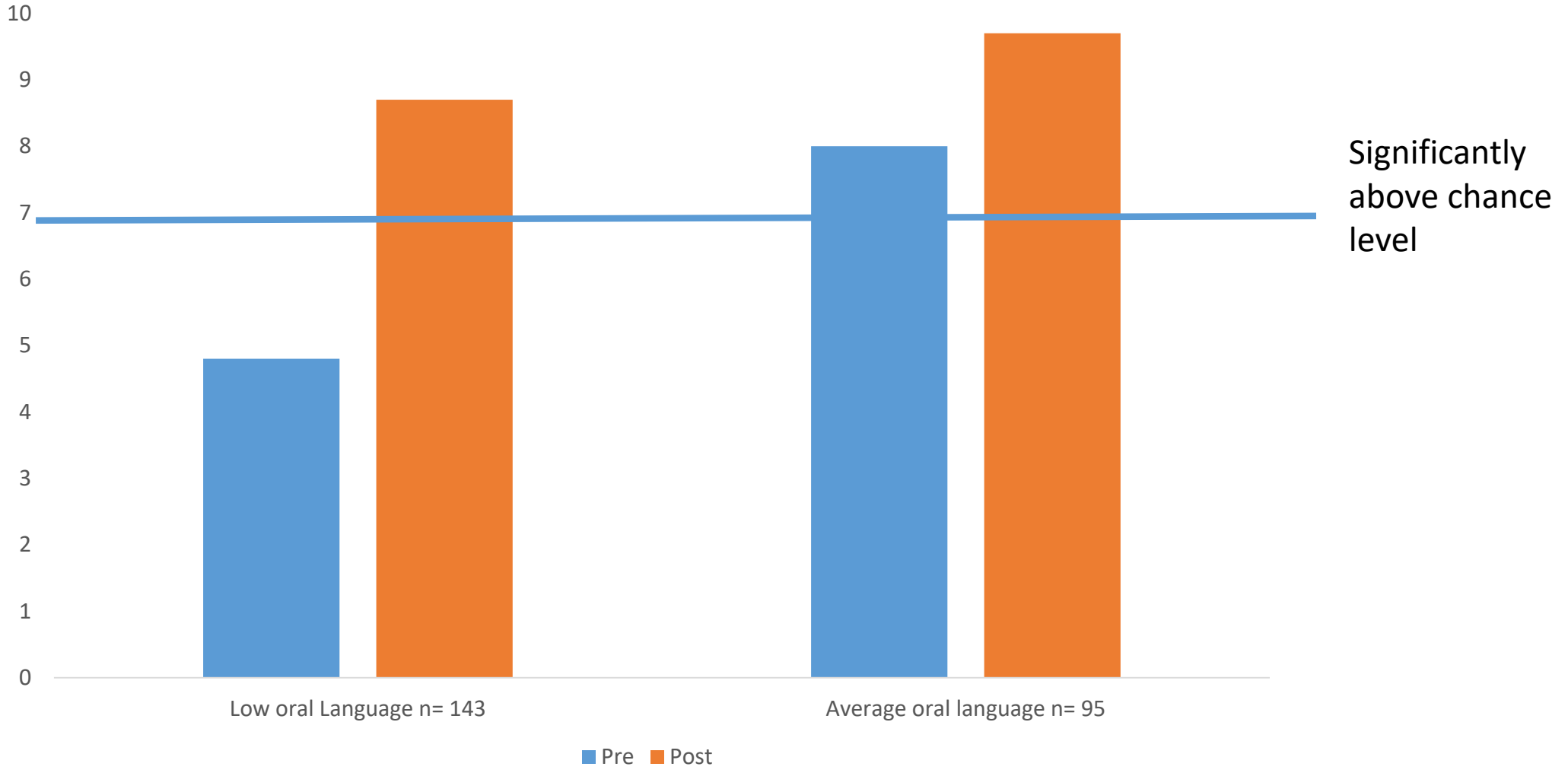
Repeated measures ANOVA: Statistically significant effects of time ($p < .001$) and group*time ($p < .001$). Significant difference in Time 2 across groups.

Expressive and Receptive Vocabulary

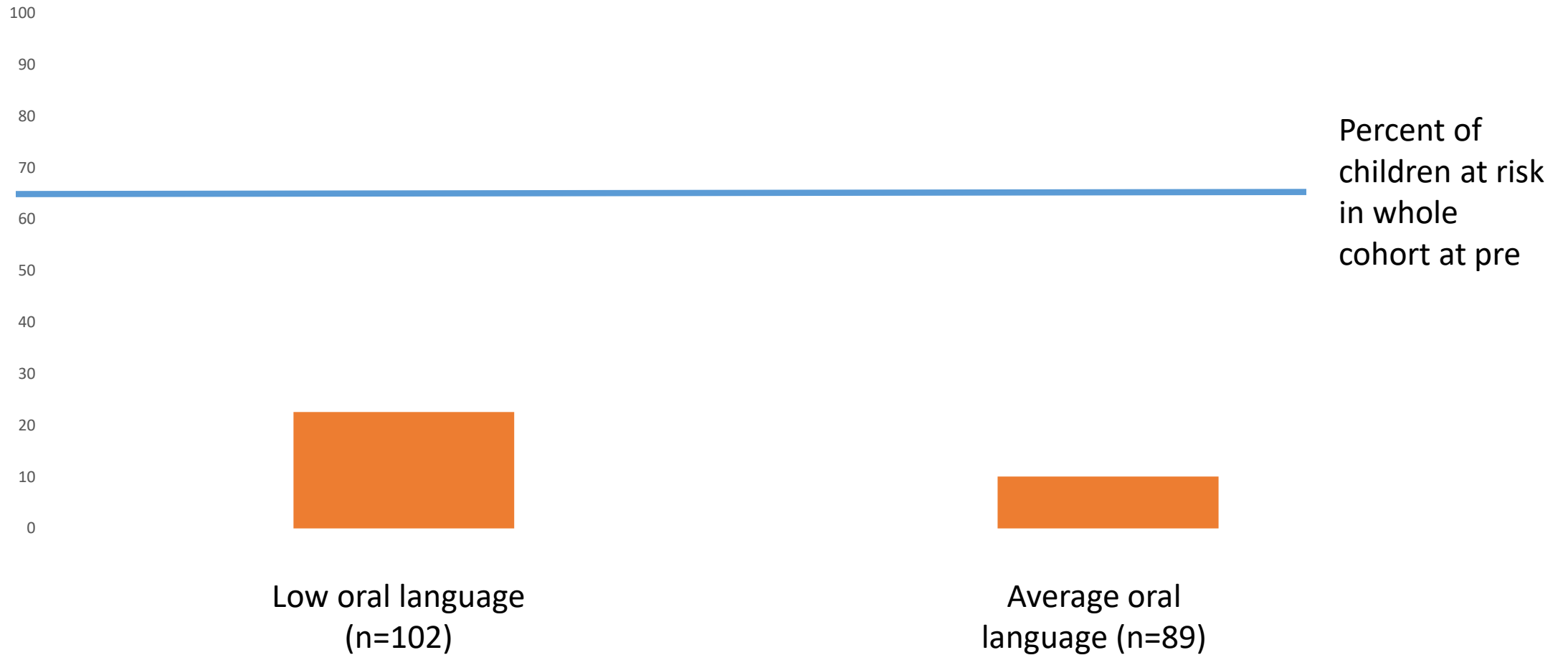


Repeated measures ANOVA: Statistically significant effects of time ($p < .001$) and group*time ($p < .001$). Significant difference in Time 2 and Time 3 across groups (i.e., significant intervention effect for both groups; stronger for Strand B).

Phoneme identity



Percent of children performing below expected level in reading accuracy (NARA) at post



Note: Preliminary data only. Currently collecting data for children aged under 72 months in Term 4 2017 (and who did not already meet criteria for reading accuracy expected at that age)

Acknowledgements

A BETTER
START

E Tipu e Rea

This research forms part of the National Science Challenge: A Better Start, funded by the Ministry of Business, Innovation and Employment (MBIE) [Grant number 15-02688]



LIGGINS
INSTITUTE



MASSEY UNIVERSITY

