

ArcGIS Pro

URBAN PLANNING



OFF-CAMPUS ACCESS: Online & Download (Windows Only)

Download ArcGIS Pro

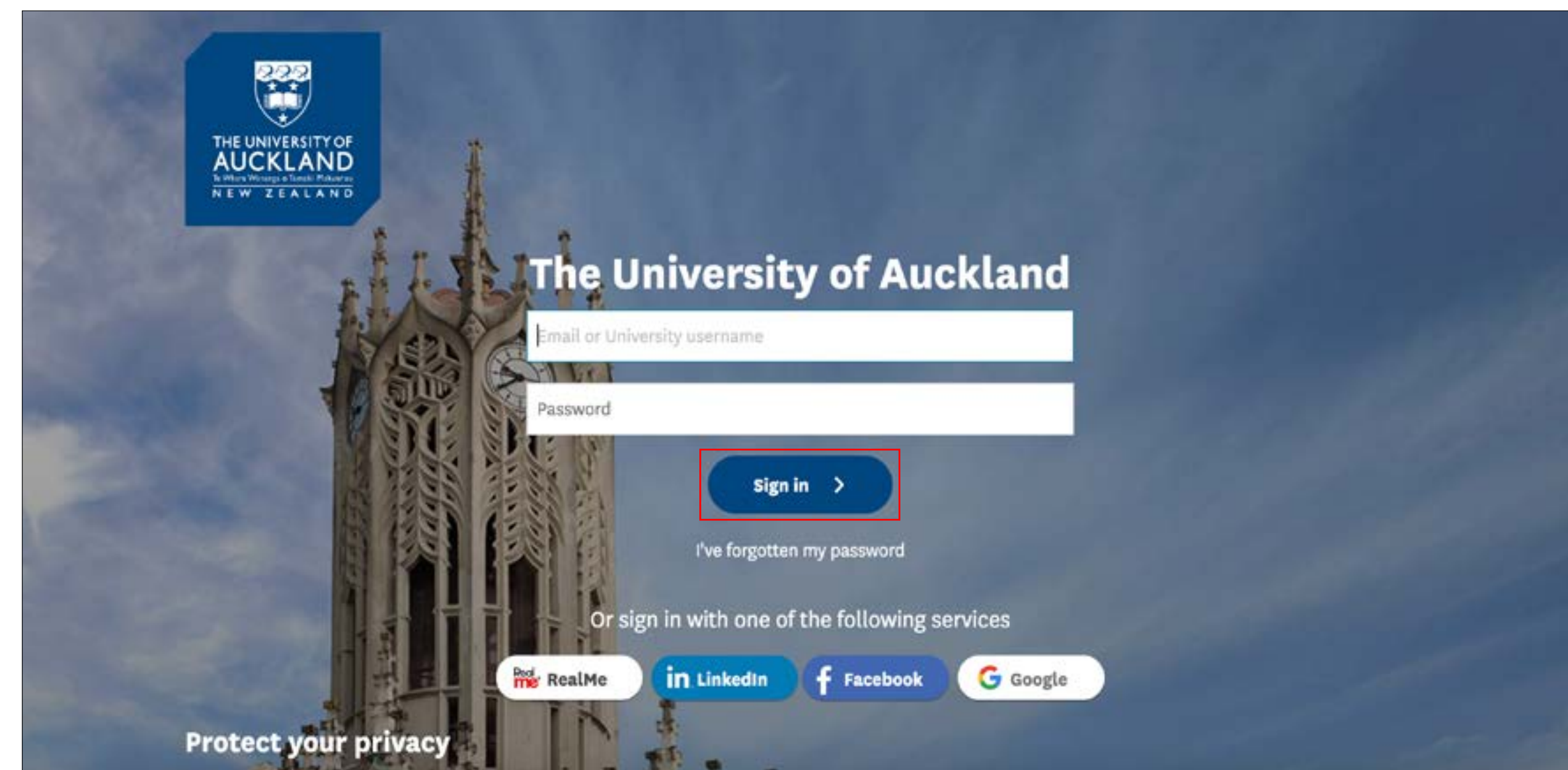
All Urban Planning students at the University of Auckland should have access to ArcGIS Online. This licence allows you to download ArcGIS Pro onto a personal device (Windows) from ArcGIS Online for off-campus use.

This software is NOT compatible with a Mac operating system. If you have a Mac, using ArcGIS Online (below) or Flex-IT (p.4) are suitable alternatives.

To use ArcGIS Online and download ArcGIS Pro please follow the steps below.

1. Login to ArcGIS Online:

- Copy the following link: <http://uoa.maps.arcgis.com/>
- Paste it into a browser on a University or a personal computer.
- Sign in using your personal University of Auckland login.
- You now have access to several limited ArcGIS Online tools.

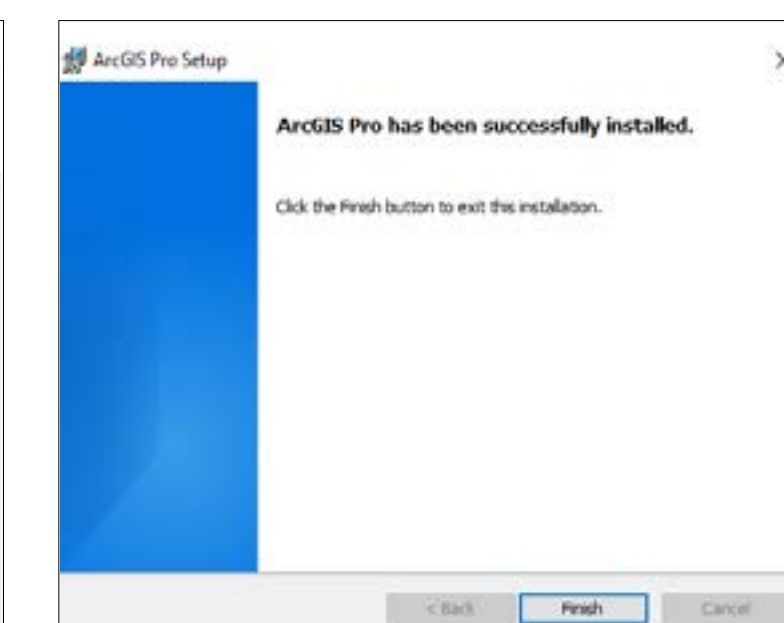
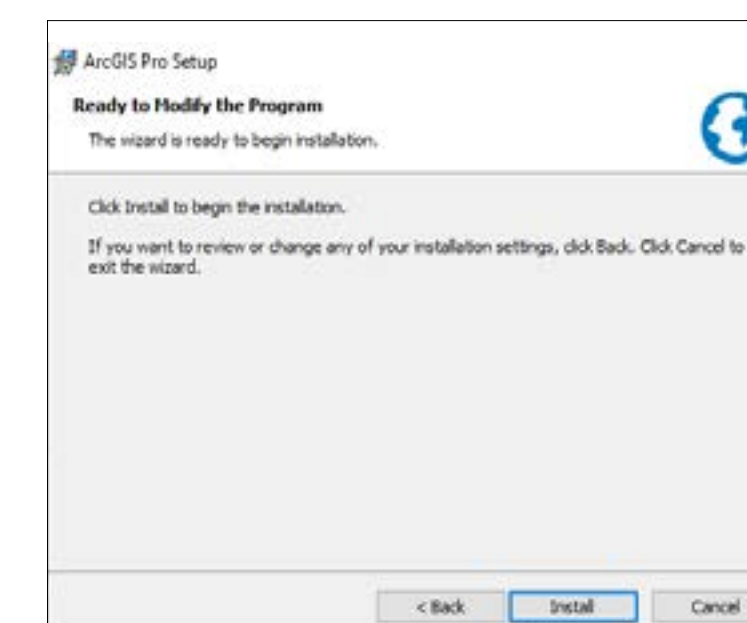
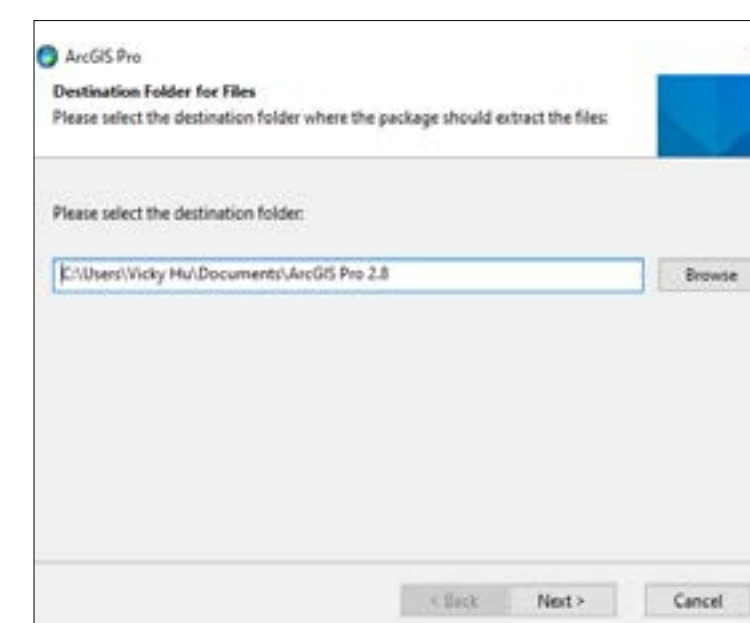
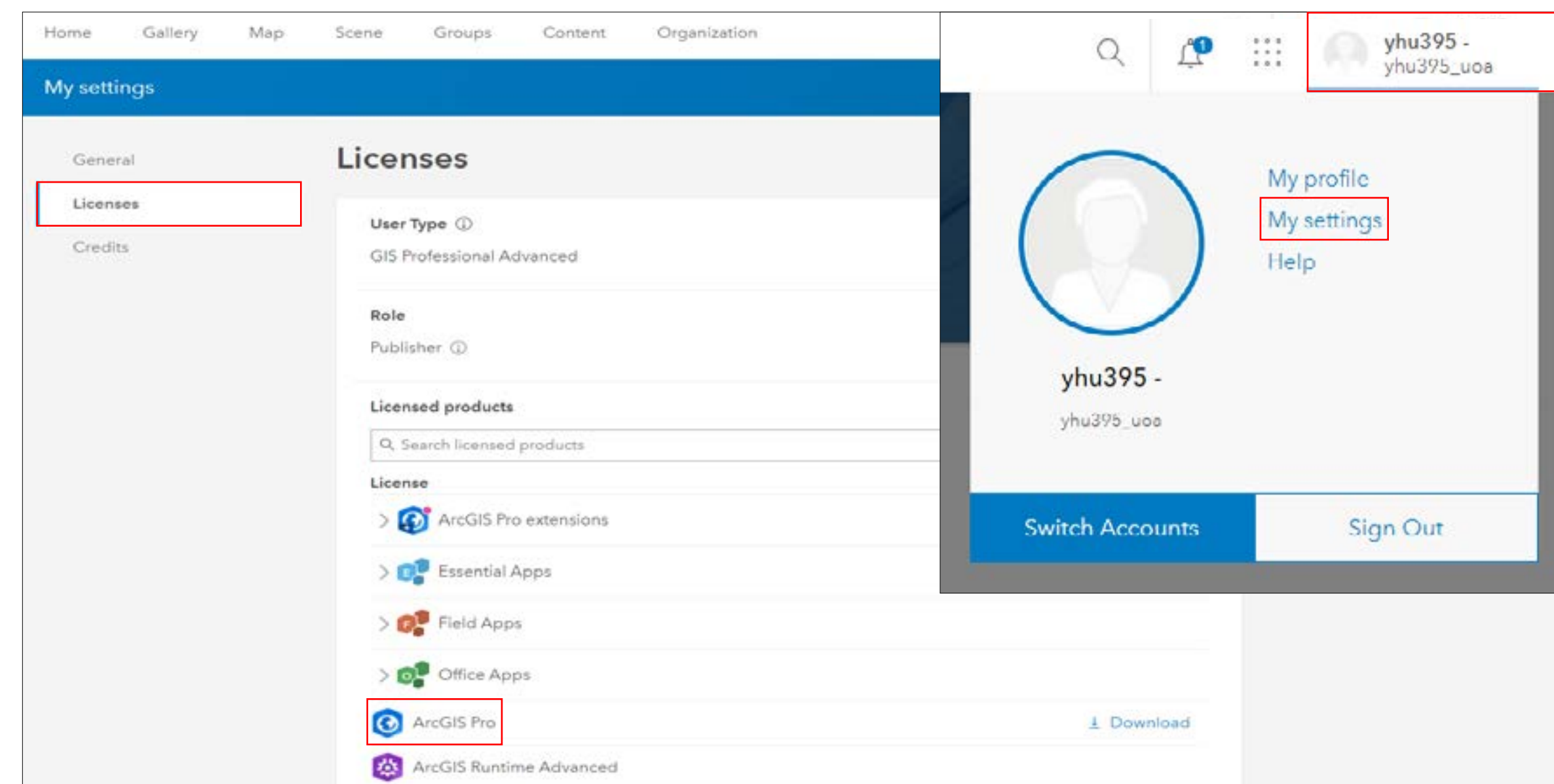


OFF-CAMPUS ACCESS: Download (Windows Only)

2. Download ArcGIS Pro:

- After logging into ArcGIS Online click on your profile icon (top-right).
- Then, select My Settings > Licenses > Licensed Products > ArcGIS Pro.
- Select 'Download'.
- Select the download destination, and click 'Next'.
- Install.
- Once installation is complete, select 'Finish'.

Note: Login and basic use instructions for ArcGIS Pro can be found from Slide 6.



OFF-CAMPUS ACCESS: FlexIT (Windows or Mac)

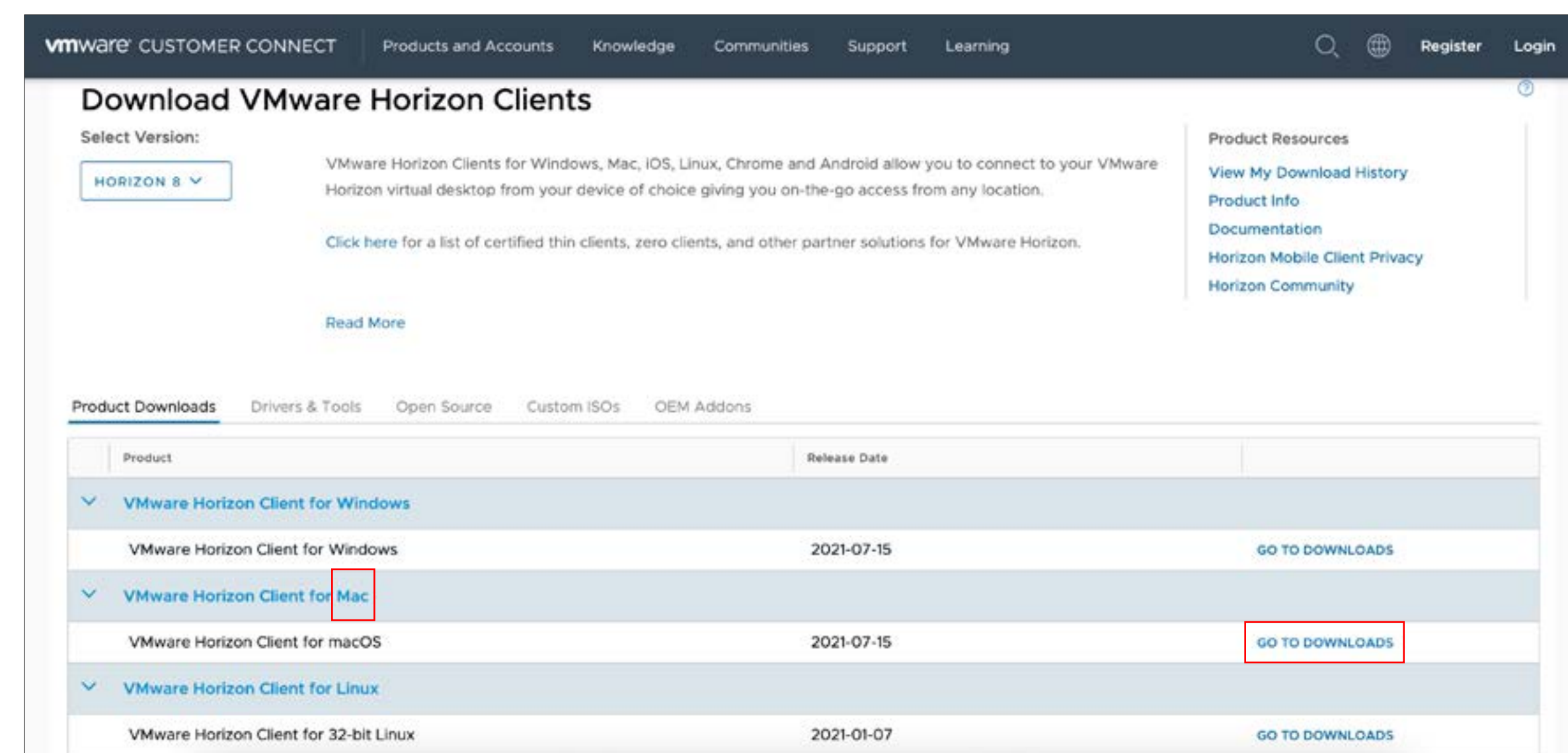
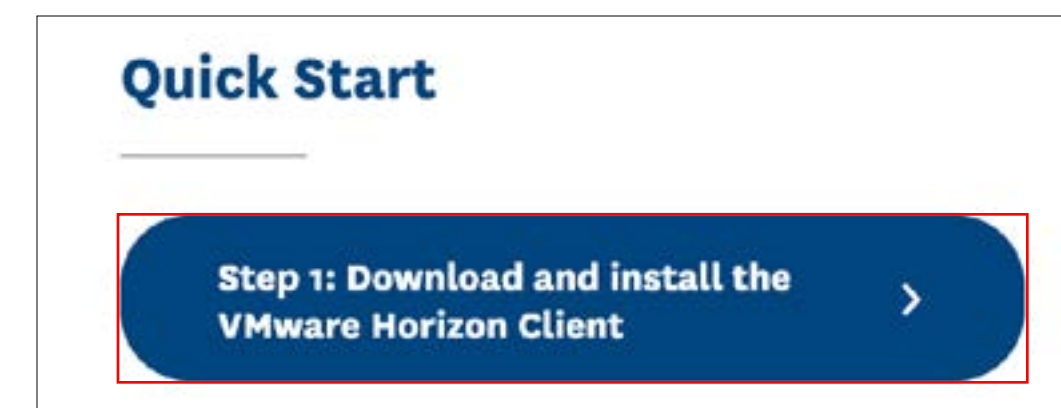
Use ArcGIS Pro through FlexIT

Students can also access ArcGIS Pro off-campus using FlexIT. This tool supports numerous softwares while minimising strain on the students personal device.

Note that FlexIT does NOT allow you to download ArcGIS Pro onto any personal device.

To use FlexIT for ArcGIS Pro, please follow the steps below.

1. Download & Install the VMware Horizon Client:
 - Copy the following link: <https://www.auckland.ac.nz/en/students/my-tools/flex-it/flexit-guide.html>
 - Paste the link into a browser on a personal computer for instructions and videos to support the following steps.
 - Under 'Quick Start' select 'Step 1'.
 - Download the required version of VMware for your device.
 - Then, Install and close requests to enter a Connection Server.

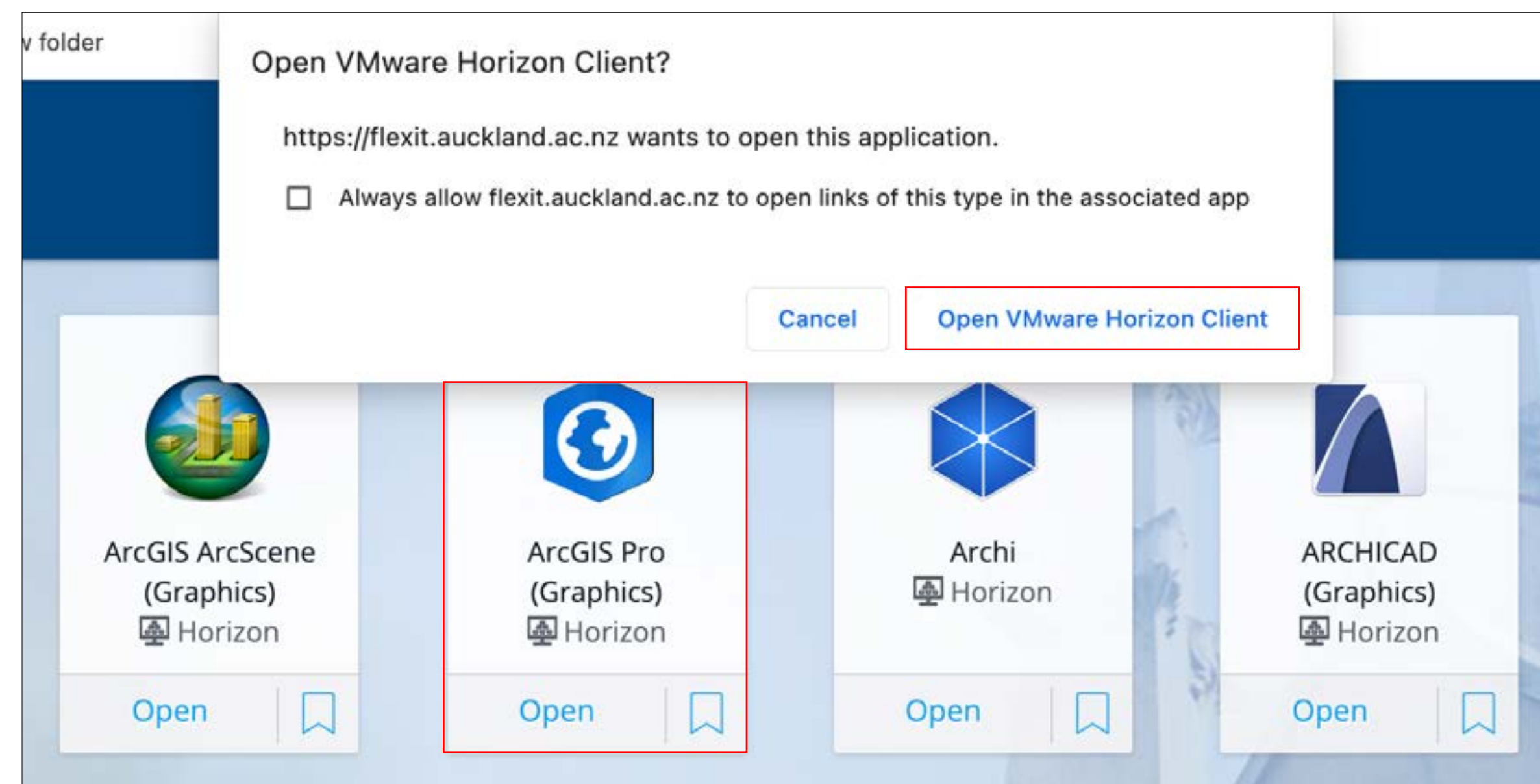
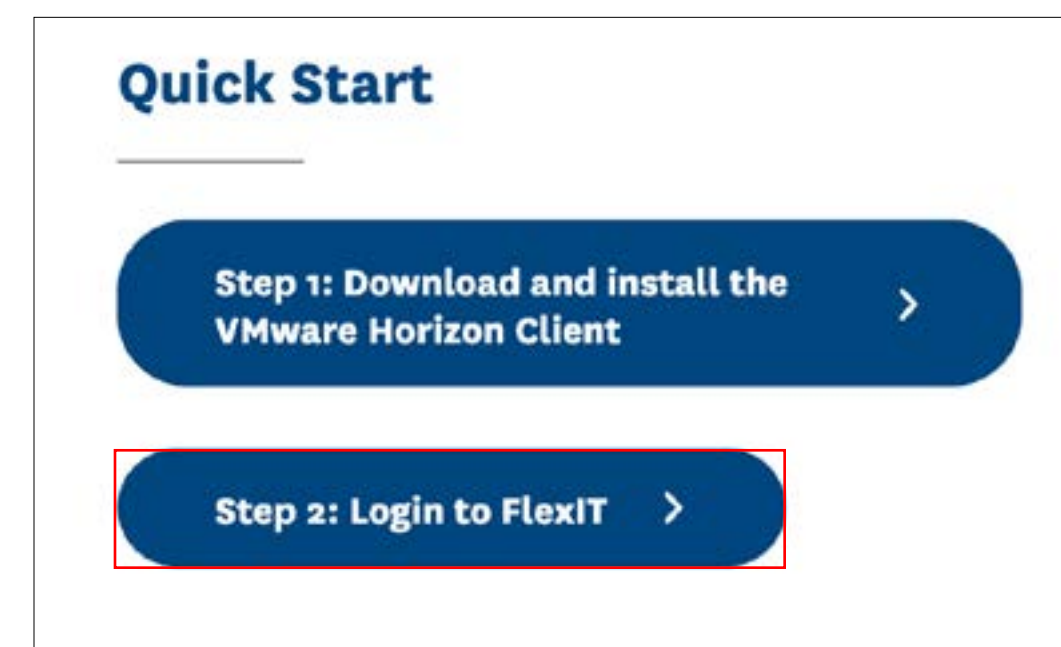


OFF-CAMPUS ACCESS: FlexIT (Windows or Mac)

2. Open ArcGIS Pro:

- Return to the University's FlexIT instruction page.
- Under 'Quick Start,' select 'Step 2'.
- Login using your usual University login.
- Once logged in, you can search or scroll to find ArcGIS Pro, or other ArcGIS softwares such as ArcMap.
- Select 'Open' on the desired software.
- Select 'Open VMware Horizon Client' in the pop-up.
- 'Allow' ArcGIS Pro access to your home folder and removable storage from the pop-up.

Note: Most ArcGIS softwares are incorporated into ArcGIS Pro.

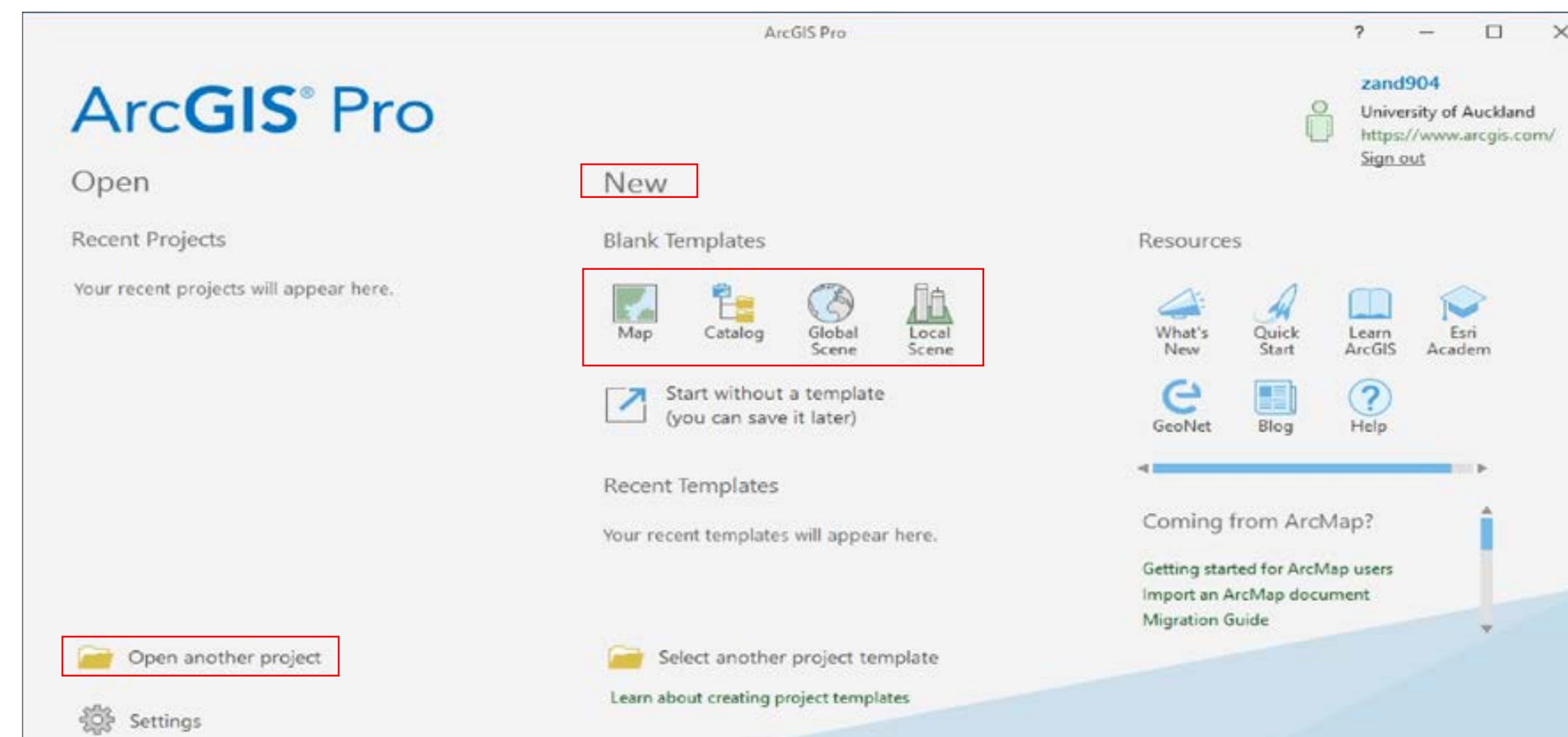
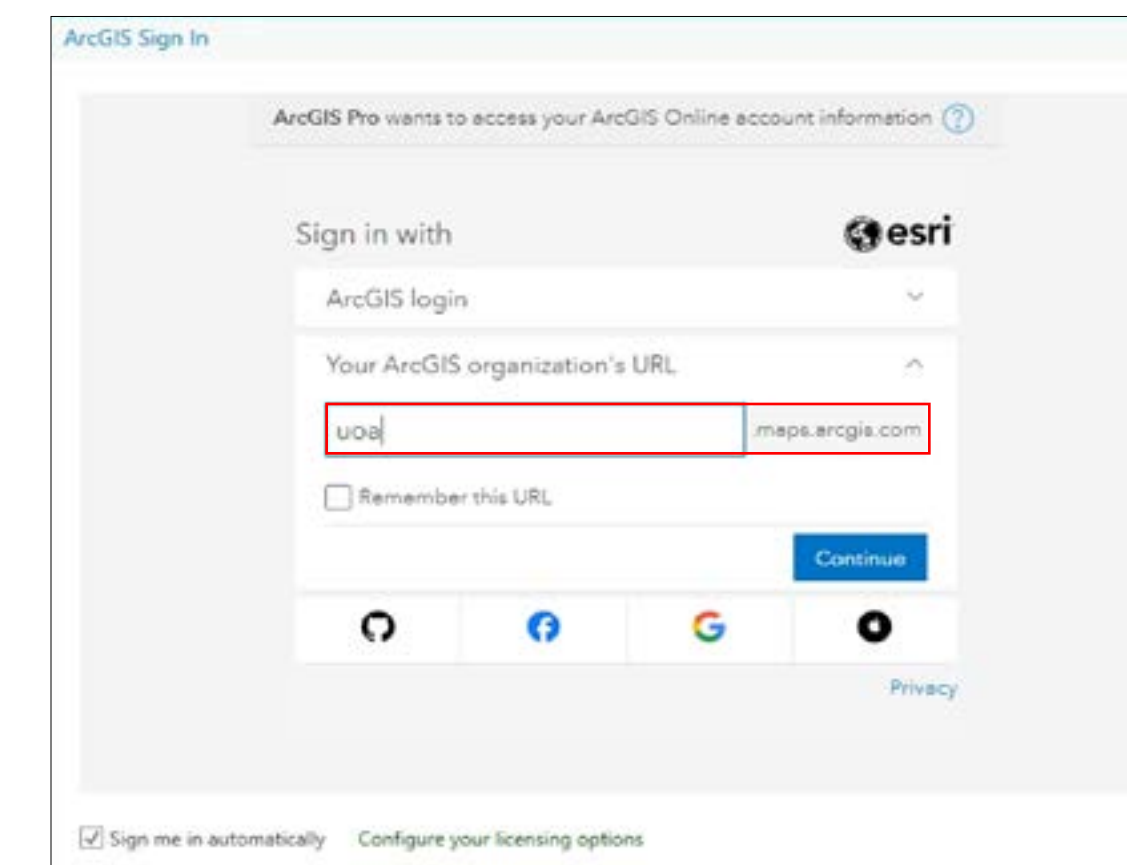
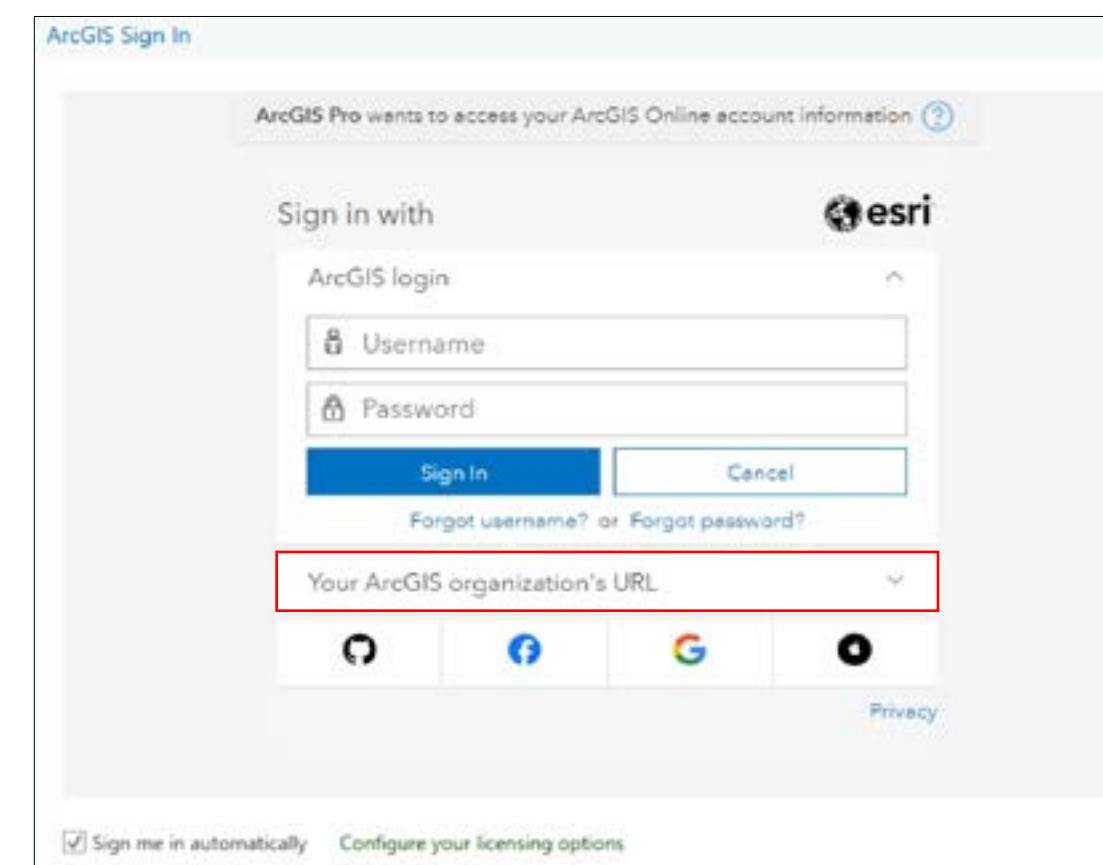


OFF-CAMPUS ACCESS: Login

ArcGIS Pro Login

1. Login to ArcGIS Pro:

- For both downloading & accessing ArcGIS Pro, you'll need to login again using 'Your ArcGIS organisations's URL'
- The url is 'uoa'
- Then login again, using your personal University credentials.
- ArcGIS Pro should open (as seen in the bottom image on the right).

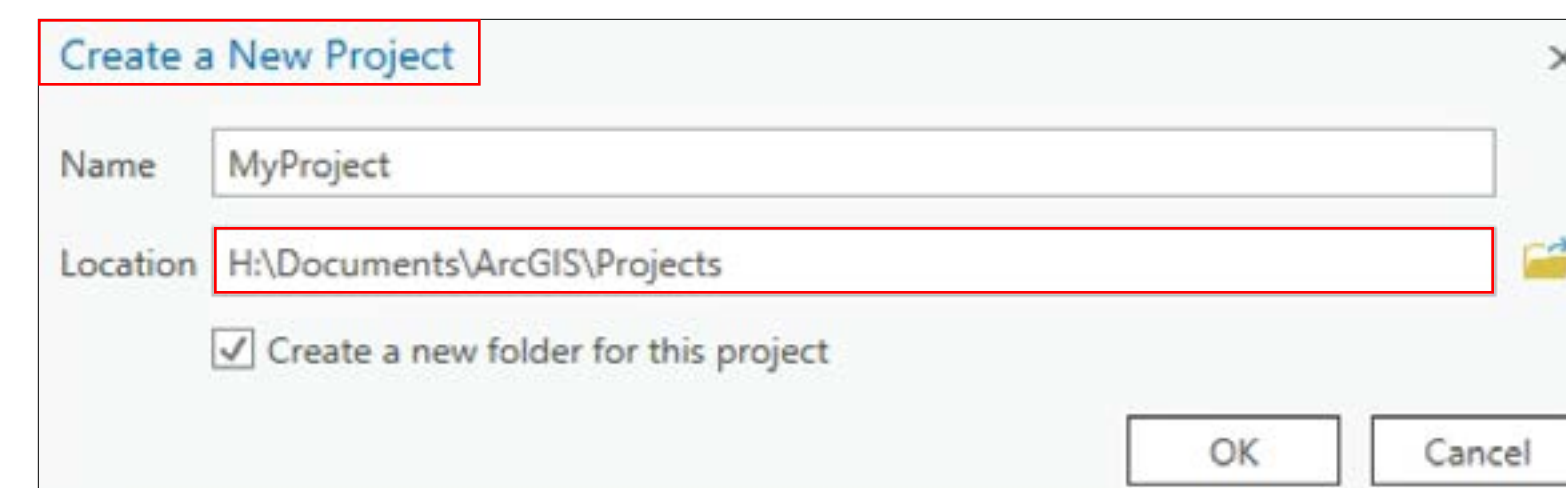
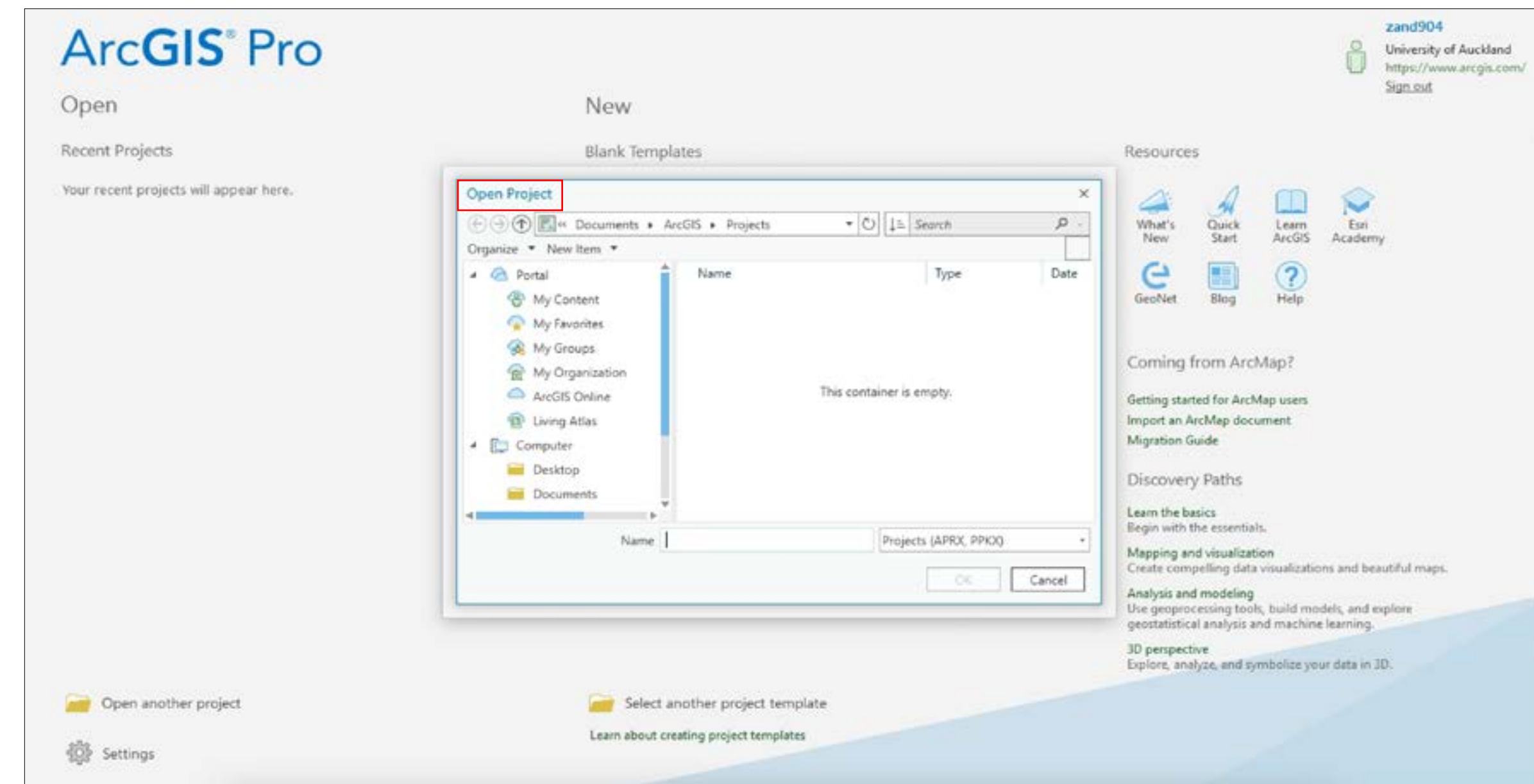


ARCGIS PRO: Basic Functions

ArcGIS Pro Functions

1. ArcGIS Pro Setup:

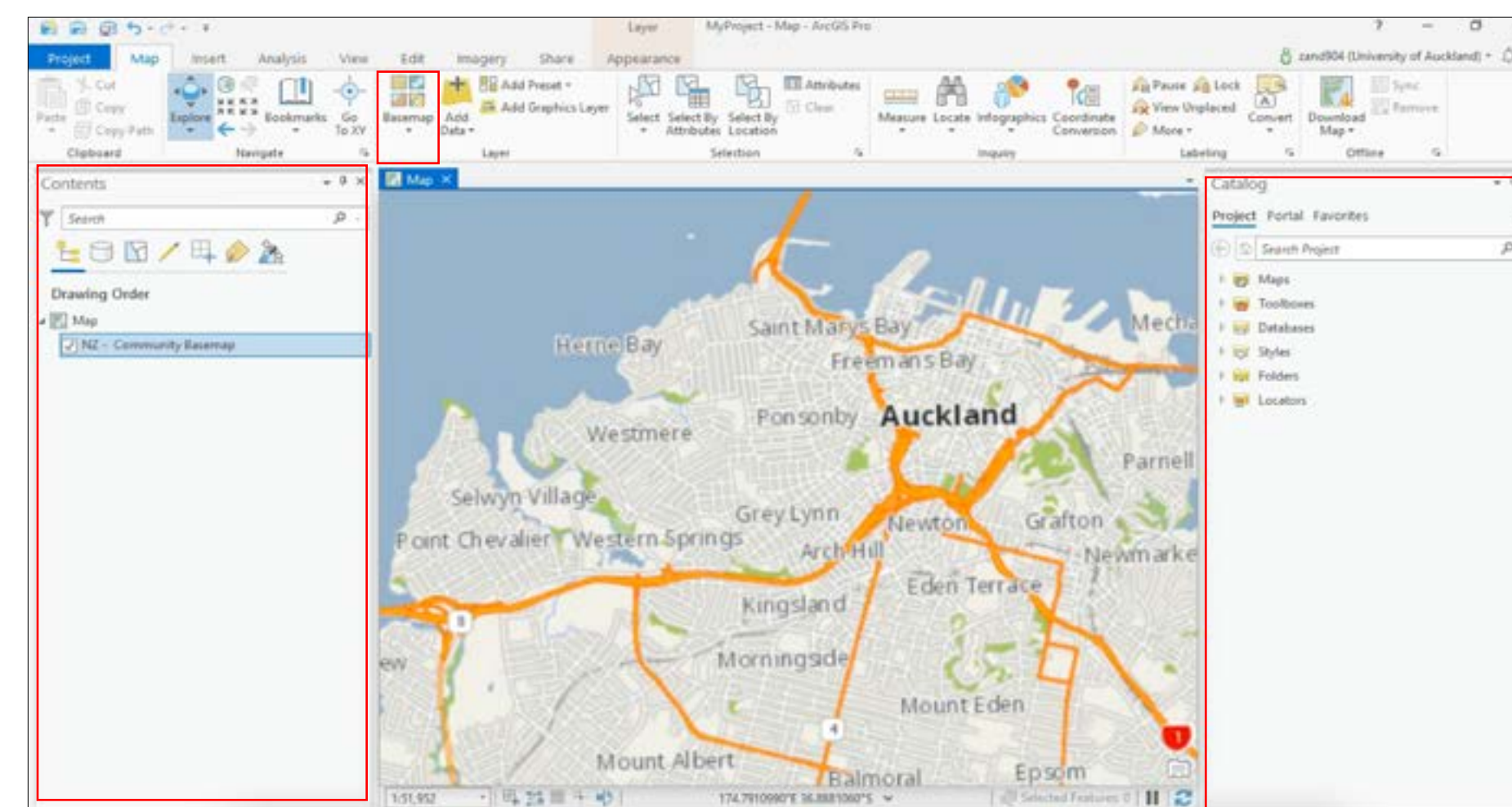
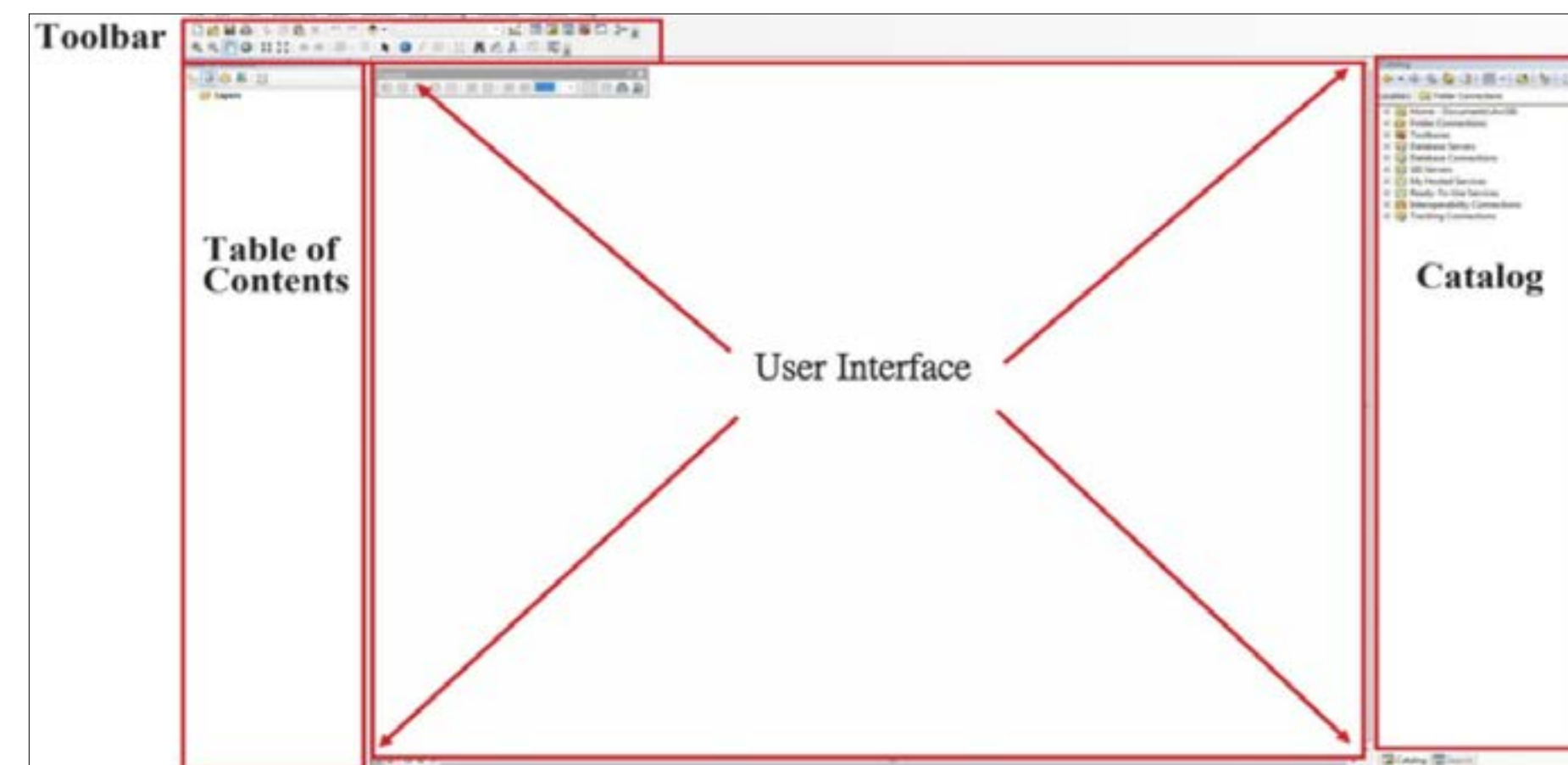
- To access existing/past ArcGIS Pro projects, select 'Open'.
- Then, navigate to the location of the file.
- To create a new document, select a blank template and a location to save it.
- Ideally, this should be on your own device or a USB.
- If not at the start, make sure you save a copy to your own device before you exit the application otherwise you are likely to lose your data.



ARCGIS PRO: Basic Functions

2. ArcGIS Pro Layout:

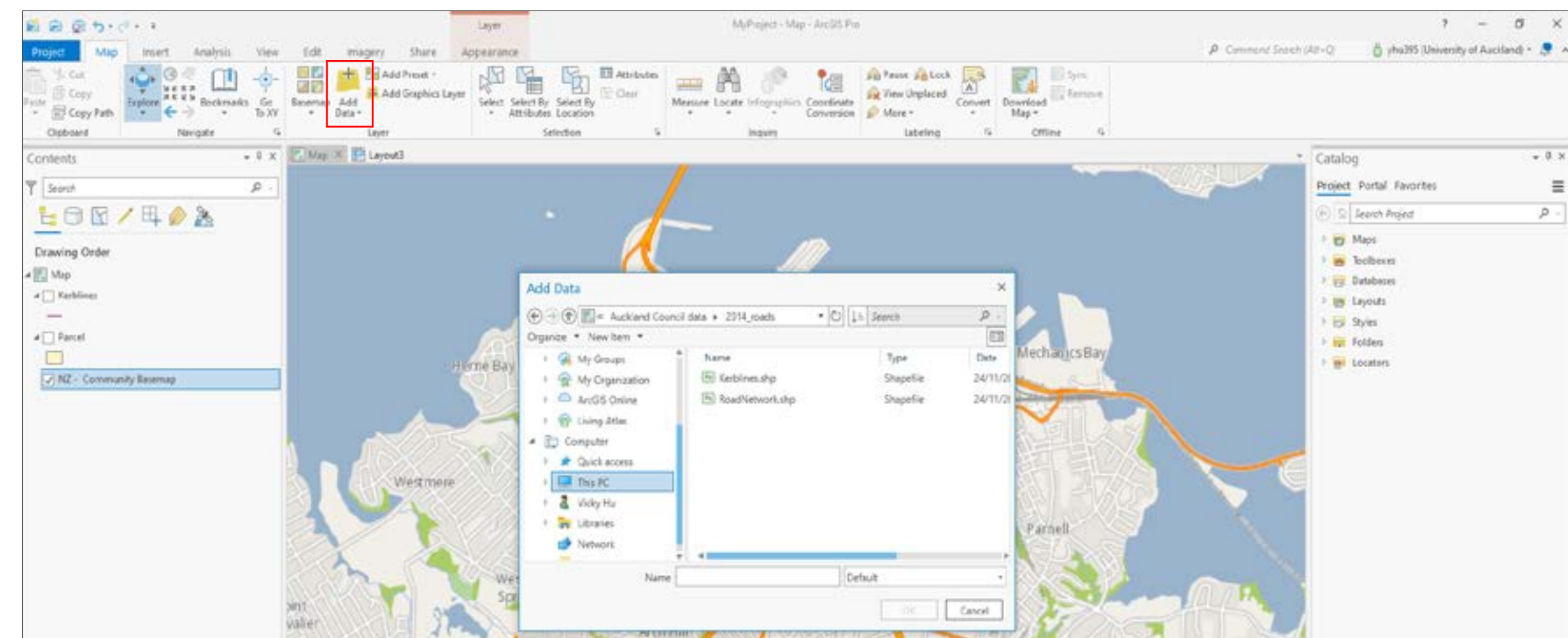
- The layout and functionality of ArcGIS Pro remains relatively similar to ArcMap on-campus (image on the top right).
- To the left is the Contents, where all your layers are visible. You can reorder layers on top/ below each other by clicking 'Sort by editing' (the pencil icon).
- To the right is the Catalogue, which allows you to make folder connections to more easily access the data you want to use.
- The example below shows a preset basemap 'NZ- Community Basemap' in ArcGIS Pro. You can change this by navigating to 'Map' > 'Basemap'.



ARCGIS PRO: Basic Functions

3. ArcGIS Pro Data Input:

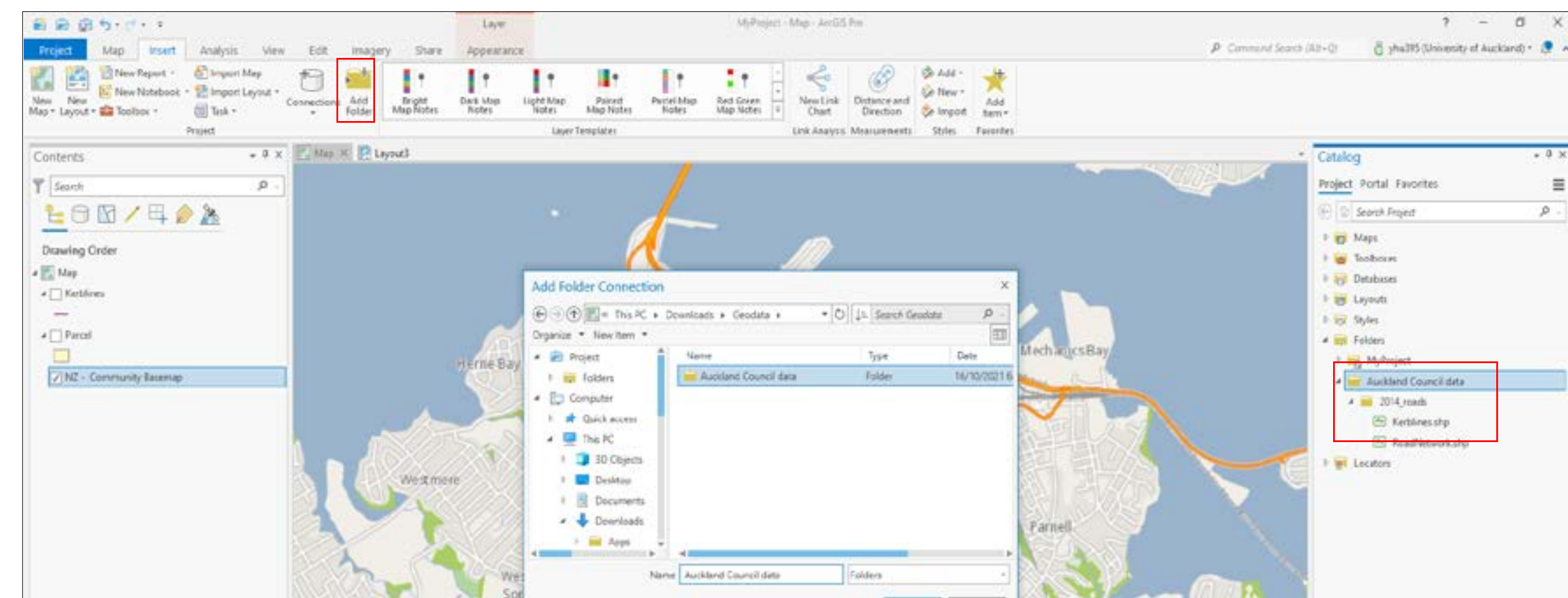
- Data can also be added in the same way as ArcMap; by navigating to 'Map' > 'Add Data'.
- You can also make a folder connection so that you can access the files on your computer directly through the Catalogue on the right, and don't have to manually add data each time.
- Make a folder connection by navigating to 'Insert' > 'Add Folder', finding the folder you would like to connect to, and clicking 'OK'. The folder should pop up in the Catalogue on the right hand side.



Data Source Locations:

You can retrieve data for your map from a range of locations including:

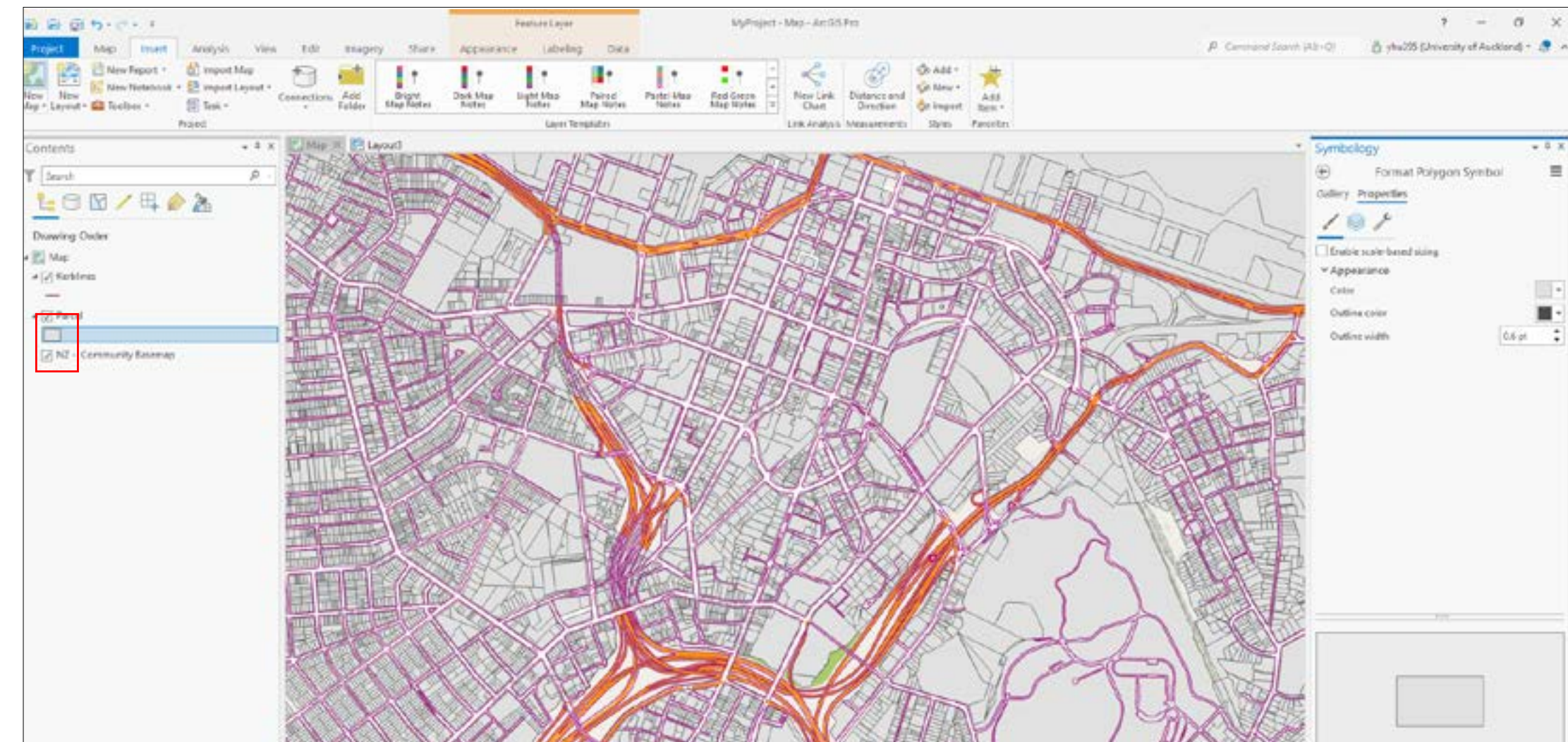
- Stats NZ (<https://www.stats.govt.nz/>)
- Auckland Council GeoMaps (<https://www.aucklandcouncil.govt.nz/geospatial/geomaps/Pages/default.aspx>)
- LINZ (<https://www.linz.govt.nz/>)
- NZTA (<https://opendata-nzta.opendata.arcgis.com/>)
- Koordinates (<https://koordinates.com/>)



ARCGIS PRO: Basic Functions

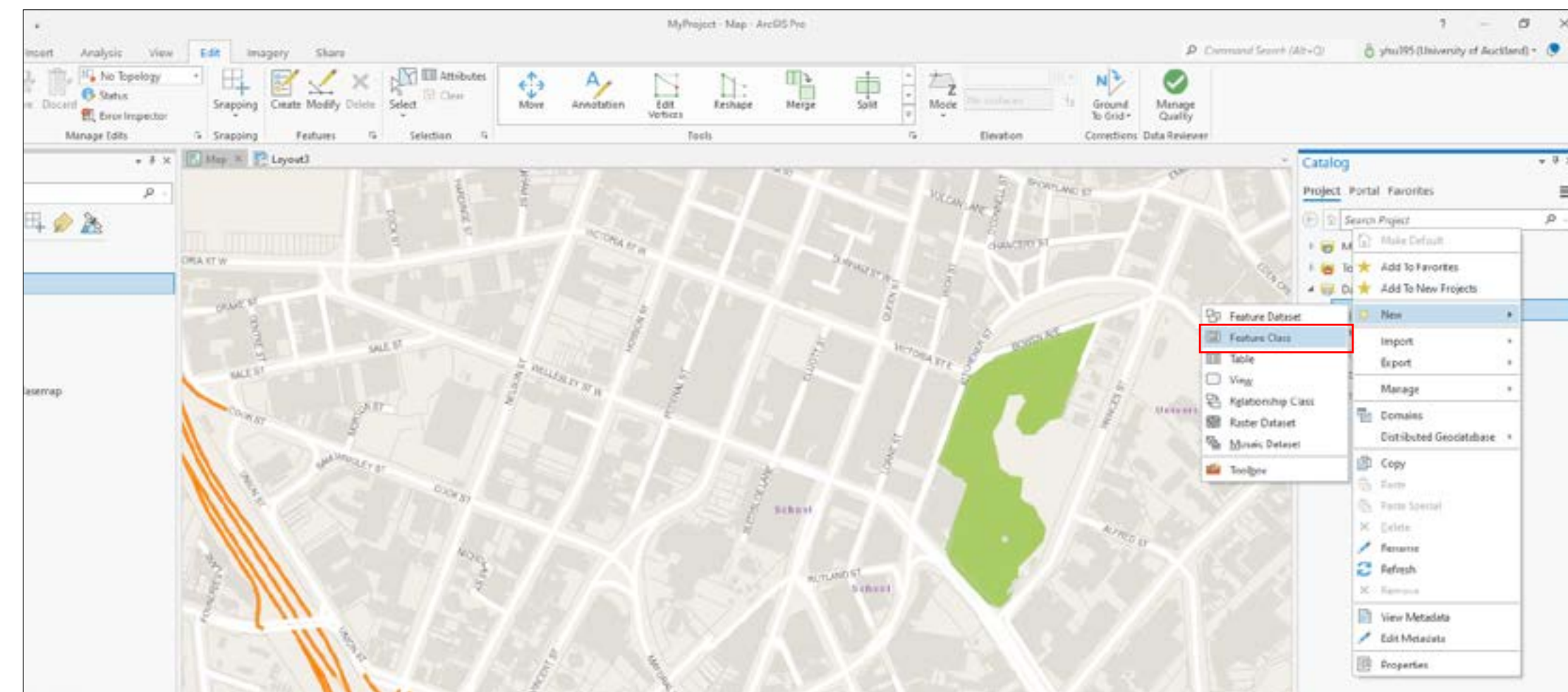
4. Editing Symbology:

- Once you have imported your data, you can easily edit the colours, line weights, and styles by clicking on the icon underneath the name of the layer. This will bring up the Symbology tab on the right hand side.
- Make sure to click 'Apply' to see the changes.



5. Creating a Buffer:

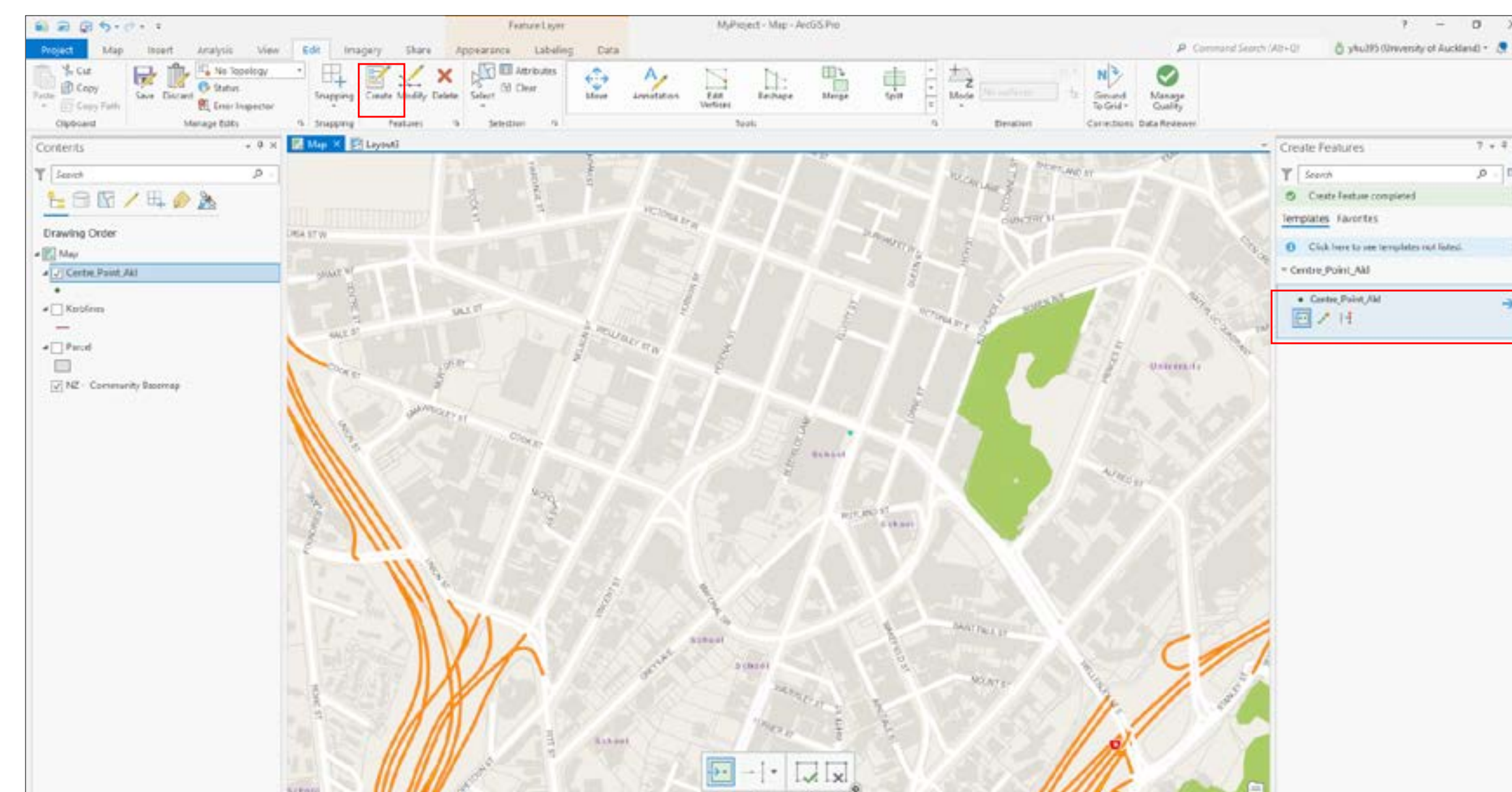
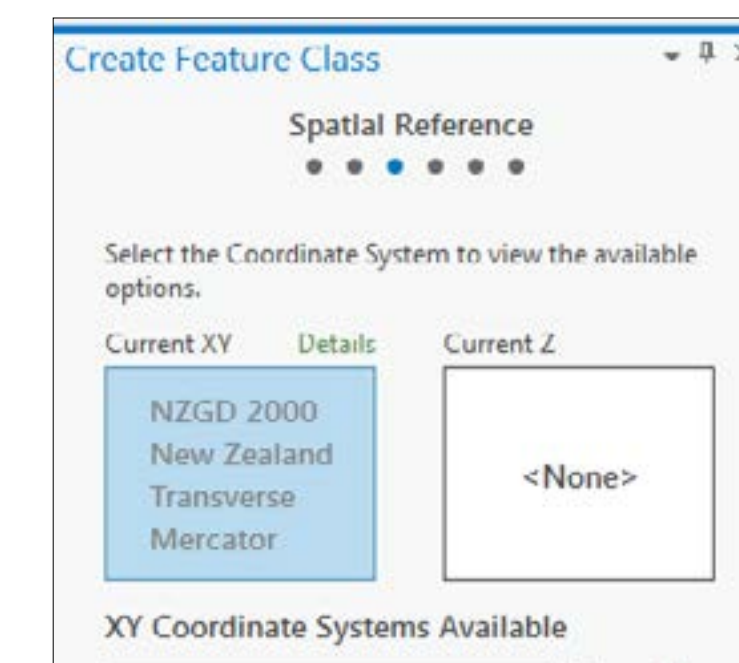
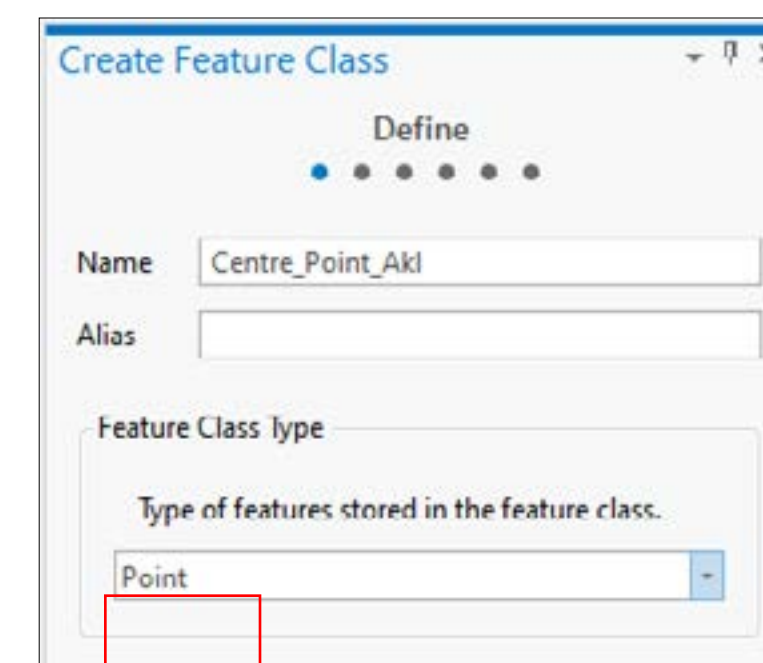
- Another handy skill is to create a pedestrian shed.
- First, you need to create a centre point.
- To do this, navigate to your file geodatabase in the Catalogue on the right. If you are using University campus computers, you might want to create a new file geodatabase so you can access it again later. Right click on it and go to 'New' > 'Feature Class'.



ARCGIS PRO: Basic Functions

5. Creating a Buffer (continued):

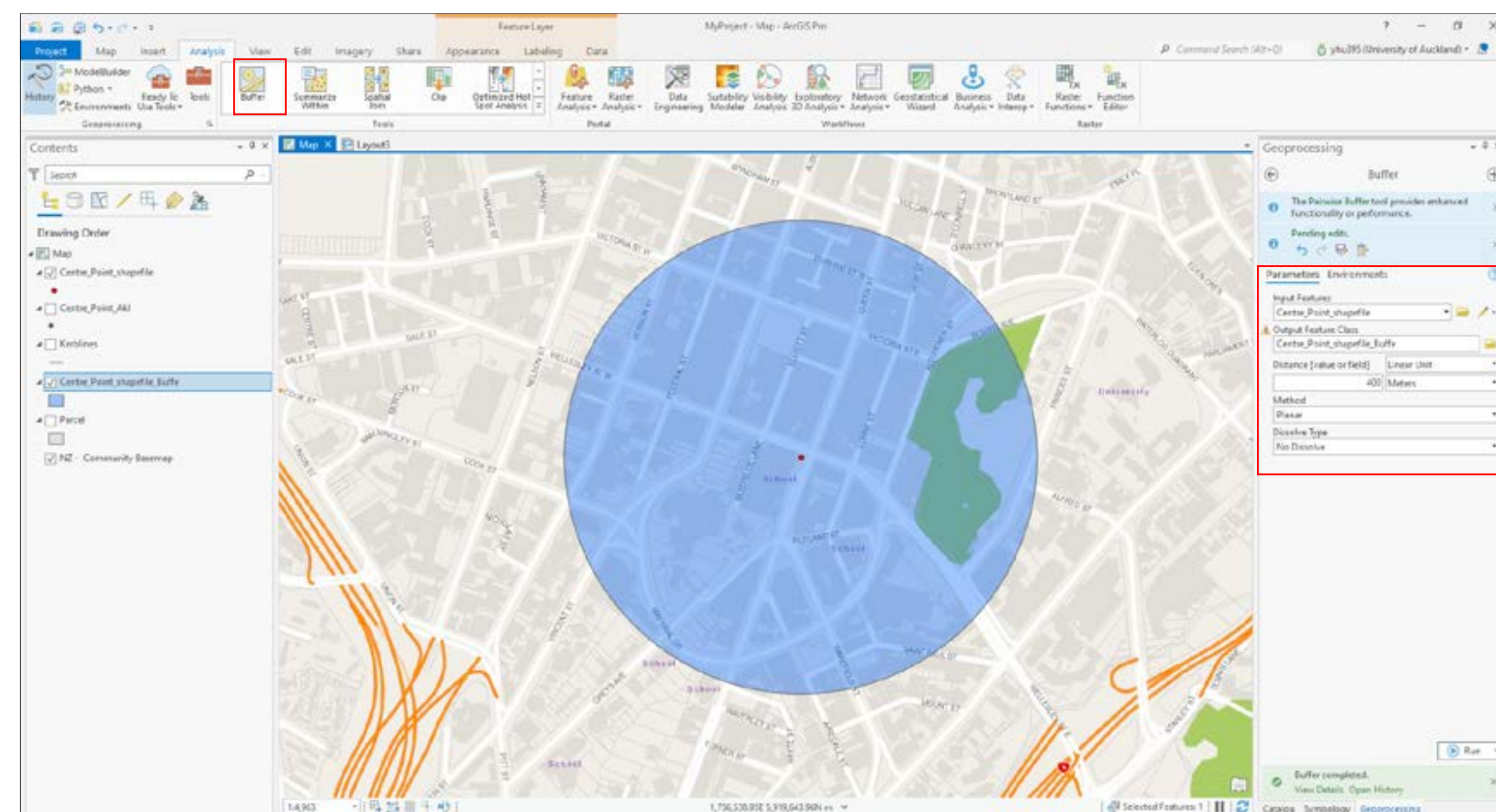
- Name your centre point and make sure it is set to the 'Point' feature class type. Also make sure the coordinates system is 'NZGD2000'.
- Once you click 'finish', a new feature class should appear in the Contents tab on the left.
- Next, navigate to 'Edit' > 'Create'. When the 'create' window appears on the right, select the centre point feature class you have just made.
- This will allow you to place a centre point anywhere on the map you would like. Once you are done, you can exit editing mode by closing the 'create' tab on the right.



ARCGIS PRO: Basic Functions

5. Creating a Buffer (continued):

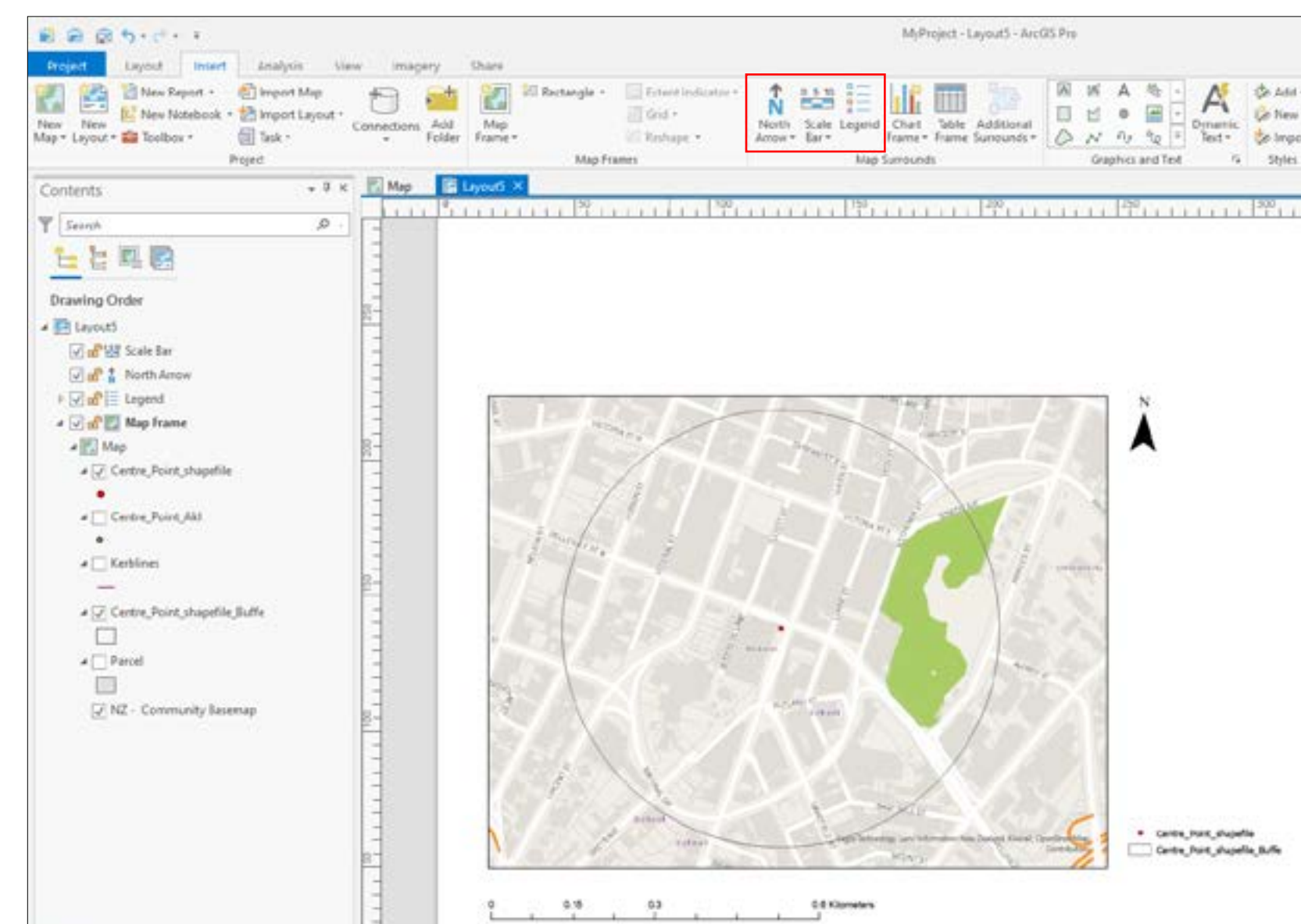
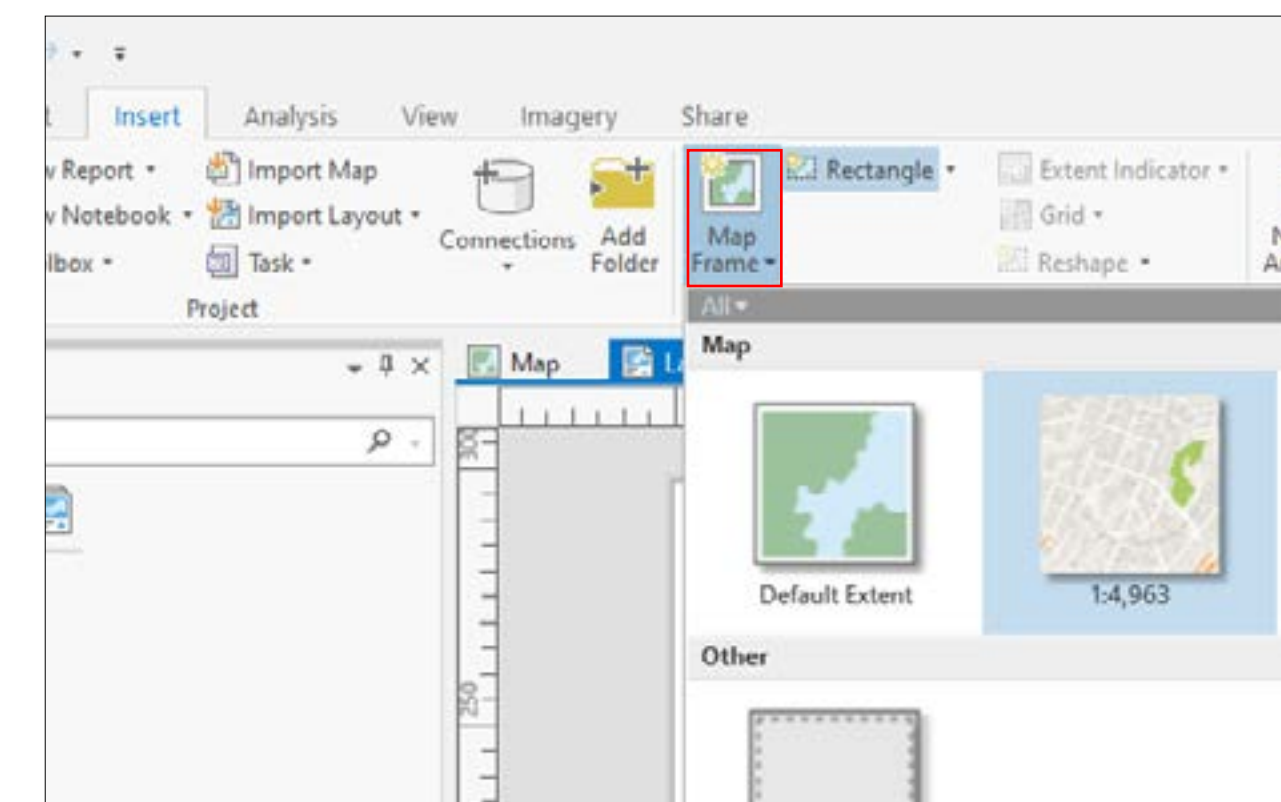
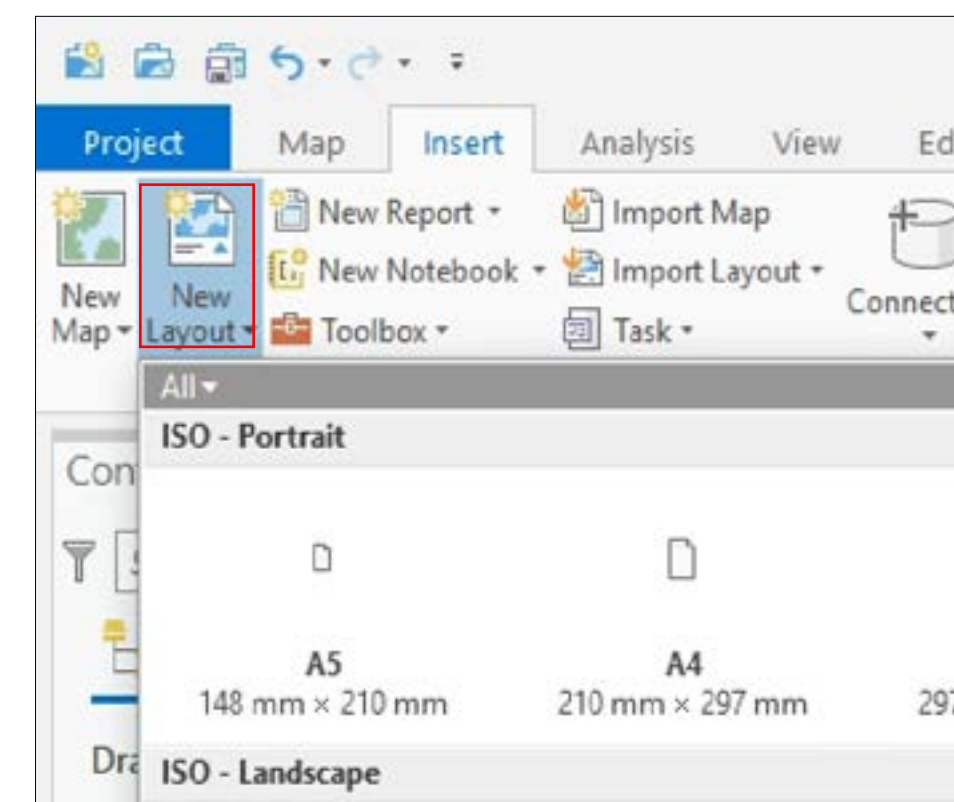
- Now that the centre point has been created, you can draw the pedshed (buffer) by clicking 'Analysis' > 'Buffer'.
- For 'Input Feature', select the centre point shapefile you just exported.
- For 'Output Feature', rename it appropriately and make sure it is saved in a file location that you can access again in the future.
- Specify your preferred radius distance, and the unit.
- Once you click 'Run', a pedshed should appear around your centre point.
- Remember you can edit the buffer— usually they will not have a colour fill.
- Done!



ARCGIS PRO: Basic Functions

6. ArcGIS Pro Layout View:

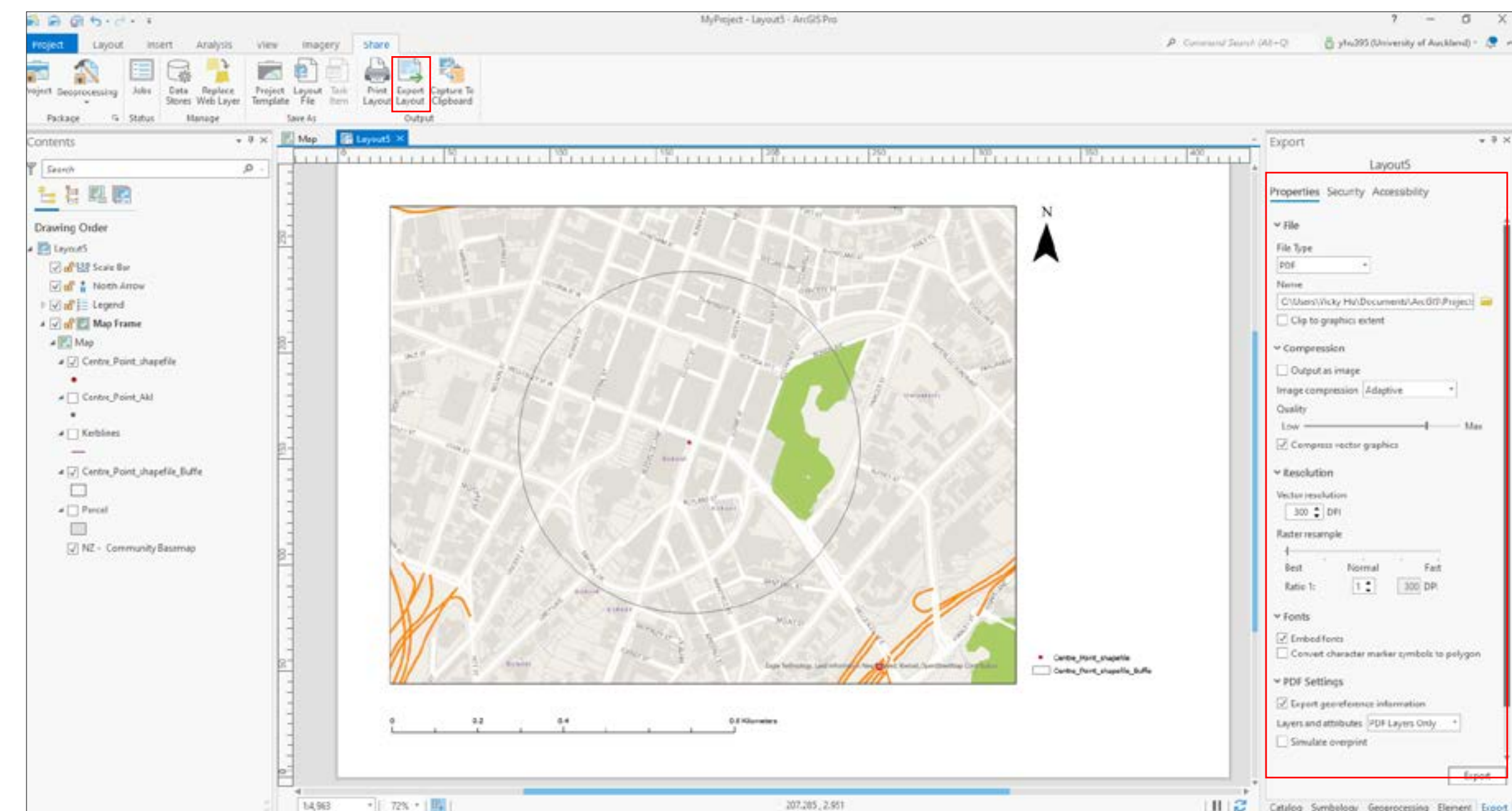
- To see what the map will look like when printed or exported as a PDF (for example), you have to add a layout.
- Under 'Insert', select 'New Layout'. Select the desired size (typically A3).
- Once the A3 page appears, navigate to 'Inset' > 'Map Frame', and select the map you want to add to this page.
- Click and drag to create a frame on the page within which your map will appear.
- You can also add elements such as north arrow, scale bar, and legend by going to 'Insert', selecting the map element you want to add, and click and drag a frame where you would like to place it on your page.



ARCGIS PRO: Basic Functions

7. Saving and exporting:

- Once your map is ready to export as a different file type such as a PDF, go to the 'Share' tab.
- Then select, 'Export Layout'.
- All done!



DIGITAL RESEARCH HUB

For more information on data sorting and/or examples of ArcMap functions please see:

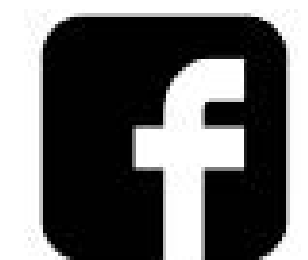
<https://www.drh.nz/off-campus-resources-for-urban-design-planning-students-2/>

For further queries or tutorial requests please contact the Digital Research Hub at:

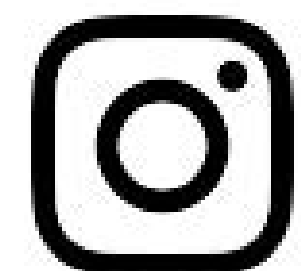
digitalresearchhub@gmail.com



drh.nz



drh.nz



drh.nz